

MALENY

COUNTRY ESTATE

Weddings

July 2026 to December 2027

Fall in love with

***MALENY COUNTRY
ESTATE***

~

*The hinterlands largest and only wedding
venue with onsite accommodation for up to
70 of your guests*



Photo: Lauren Young Weddings | @laurenyoungweddings



CONTENTS

Welcome	PG5
Our Promise	PG8
Our Team	PG11

Planning	PG13
Getting Ready - The Estate House	PG14
Getting Ready - The Studios The Parlor	PG17
Photography and Videography	PG20
Our Spaces	PG22
Ceremonies	PG24
Receptions	PG29
Accommodation	PG32
Reviews	PG34

Pricing	PG38
Standard Inclusions	PG39
Exclusive-Use Packages	PG41
Sperry Tent and Marquee Receptions.....	PG43
Sperry Tent Packages	PG44
Marquee Packages	PG45
Exclusions.....	PG46
Micro-Weddings	PG48
Elopements	PG49
Ceremony Only	PG51
Bar Service	PG53
Security and First Aid	PG53
A Few Small Things	PG55
FAQ's	PG57
Fine Print	PG58
Next Steps	PG60

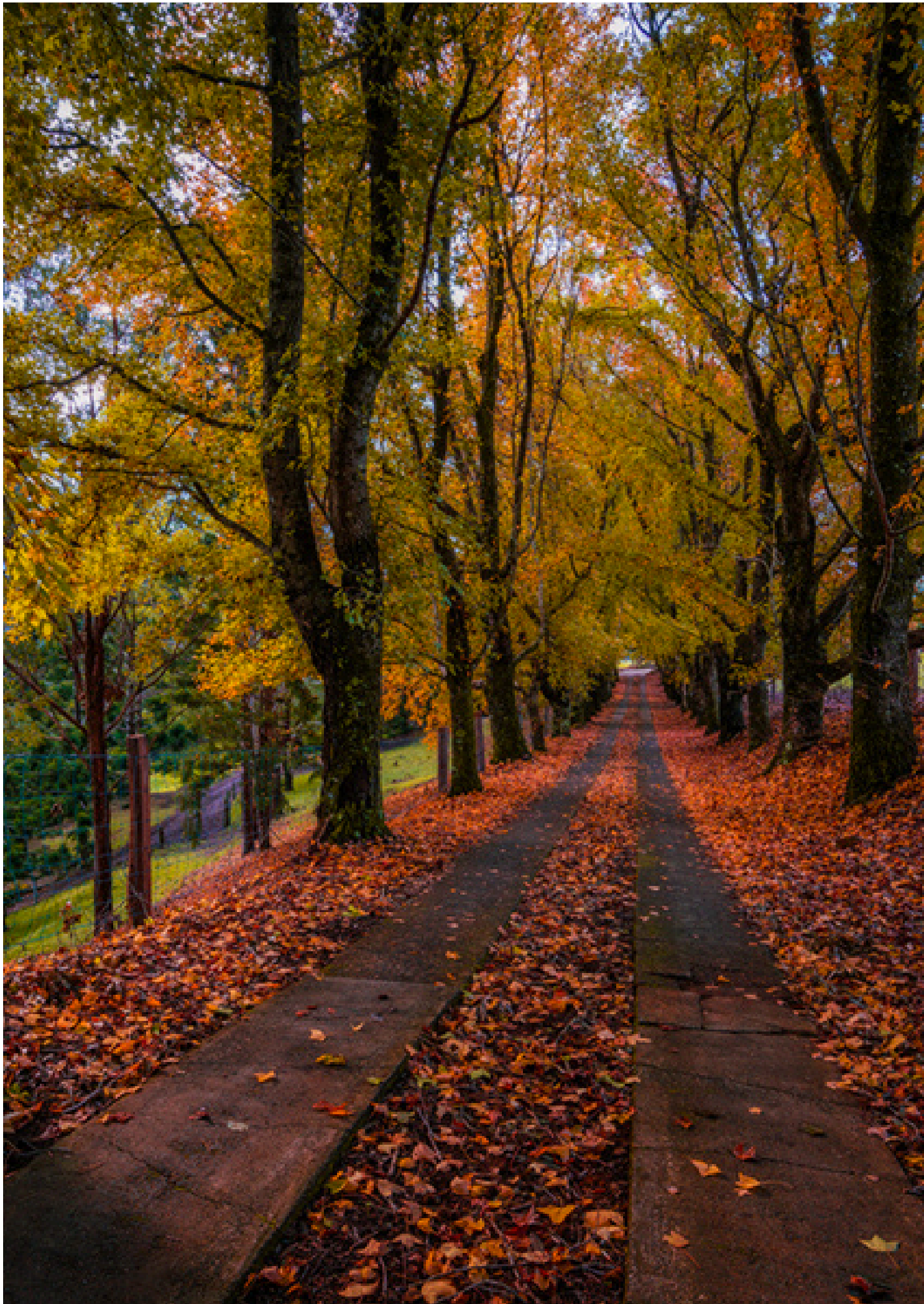


Photo: Ben Messina | @benmessinalandscapes



Welcome to Maleny Country Estate

OUR PRIVATE ESTATE BOASTS
STUNNING BACKDROPS, PANORAMIC
VIEWS AND ON-SITE
ACCOMMODATION.

THE PERFECT EXPERIENCE FOR YOUR
SPECIAL DAY.

Congratulations on your engagement and thank you for considering Maleny Country Estate for your wedding day.

From the moment you enter down the green and golden driveway, lined with towering liquid amber trees and aged rock walls, you're transported to another world.

With century-old figs and towering pines creating a beautiful, natural setting, our estate offers a calm and stunning backdrop for your celebration.

Set on 185 acres of rolling green hills with breathtaking views of the Blackall Range, Maleny Country Estate gives you everything you need to create unforgettable memories.

We'd love to invite you to visit and experience the estate in person — we're confident you'll fall in love with it just as much as we have.

Mike, Victoria and Amanda





Photo: Lee Burgess | Life and Love Photography

OUR PROMISE

NOT JUST A VENUE

We aspire to give you and your guests an unforgettable experience not just a venue.

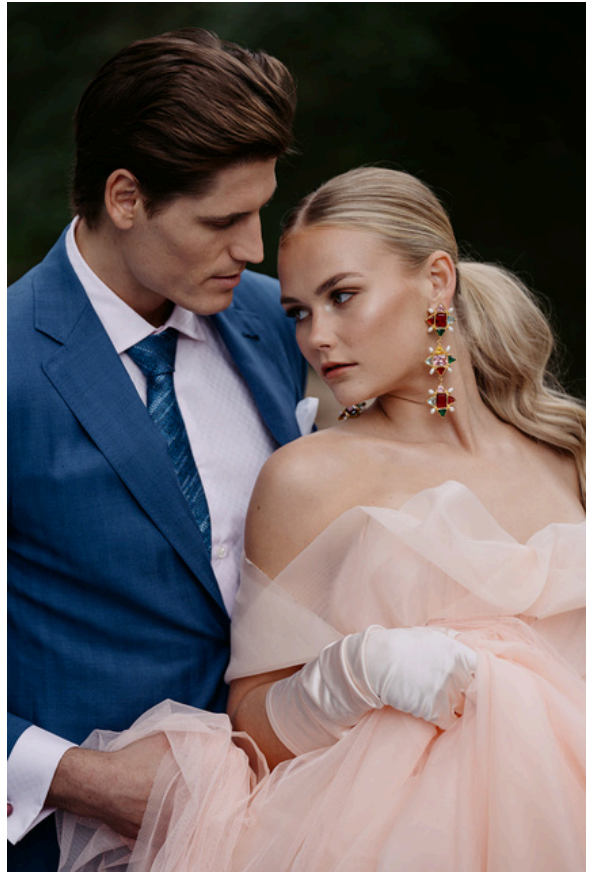
A wedding at Maleny Country Estate is not just an event — it's an immersive experience, thoughtfully designed for those who seek beauty, exclusivity, and excellence at every turn.

As a luxury, exclusive-use estate, we host only one wedding per weekend — giving you uninterrupted time to relax, prepare, and celebrate in absolute privacy. The entire property is yours, allowing you to move fluidly from ceremony to reception to recovery brunch, with no rush and no distractions.

We are proud to be the only venue in the region offering onsite accommodation for up to 70 guests, ensuring your nearest and dearest can stay close, savour the moment, and share in every part of your celebration. This seamless experience adds a rare layer of intimacy and ease that sets us apart.

With grand open spaces, romantic garden settings, and multiple locations for ceremonies and receptions, the estate offers a canvas of refined beauty. Access begins from 8:30am on your wedding day — or from 2:00pm the day prior if you're staying with us — giving you the freedom to settle in, unwind, and truly enjoy the lead-up to your day.

Whether you envision a candlelit welcome dinner beneath the stars, a chic marquee celebration, or a laid-back morning-after gathering, we'll help you curate a celebration that reflects your style and exceeds every expectation. Because this isn't just a venue. It's the beginning of your forever — and it deserves nothing less than extraordinary.



Photos by: Jac Lee Weddings



OUR TEAM

this is a beautiful family adventure for us - and we're honoured to share it with you...

In 2018, after years of searching for the perfect location, we discovered a truly remarkable property nestled in the heart of the Sunshine Coast Hinterland. Enchanted by its sweeping views, rich natural beauty, and striking rockwork, we knew immediately that this was a place destined for something extraordinary.

Maleny Country Estate is our family's vision brought to life — a luxury wedding destination where elegance meets authenticity. As custodians of this land, we, Michael, Victoria, and Amanda, have dedicated ourselves to crafting an experience that is both breath-taking and deeply personal.

We've meticulously curated every detail of the estate, creating a collection of intimate spaces that allow couples and their guests to truly connect with the landscape and each other. From elegant ceremony backdrops to considered reception settings, our aim has always been to offer versatility without compromise — a setting that adapts to your vision with grace and style.

To ensure every element met the highest standard, we consulted extensively with industry leaders — from photographers and florists to stylists and planners — to integrate thoughtful inclusions that elevate both the guest experience and the ease of working with our venue.

One of our greatest luxuries is space — and with it, the ability to host up to 70 guests onsite. This rare offering allows your celebration to unfold effortlessly, giving your loved ones the freedom to stay, relax, and be fully immersed in the moment.

As a family, we're proud to have engaged almost exclusively with local artisans, tradespeople, and businesses throughout our journey — a reflection of our commitment to community, craftsmanship, and sustainability.

Maleny Country Estate is more than a venue. It's a sanctuary of celebration, created with love, and offered with care. We look forward to welcoming you and helping you create a wedding that is as unforgettable as the estate itself.



Photos by: Jac Lee Weddings @jacleeweddings

PLANNING

We want to help make saying 'I Do' the only thing you need to think about on your day.

WE ARE SMALL BUT MIGHTY

We are a small, family-run estate and as such have a small team and currently operate as a venue only.

Our team works closely with you, your wedding planner and stylists, and your chosen vendors, to ensure everything runs smoothly.

If you have no idea where to start, from stationary to catering to flowers, we can help partner you with one of our incredible preferred suppliers who will turn your dream into a reality.

Due to the size of our estate and the locations of our ceremony and reception spaces, all weddings at Maleny Country Estate must have a wedding planner or on-the-day coordinator who is not part of your wedding guest list. This person is responsible for organising all your vendor agreements, liaising with the venue (us), and all vendors and providing run sheets prior to the day, with all milestones for your day/weekend mapped and provided to all vendors.

BEFORE THE DAY

We ensure we stay connected and in communication in the lead-up to your big day. We conduct planning meetings and check-ins with all our couples and their nominated planner at 6 months, 3 months, and 4 weeks prior to your wedding date.

ON THE DAY

We want you to relax and enjoy this day with your friends and family. We live on-site, so we are never too far away if/when you need us.

The day of your wedding our venue manager and our support staff will be on-site to ensure things run smoothly from a venue perspective.

THE ESTATE HOUSE

A luxurious beginning to your special day

START YOUR DAY RIGHT

We know that having the right space and atmosphere to get ready in is paramount to the perfect wedding day. The Estate House has it all.

The jewel in our crown and our favourite accommodation space on the estate. The Estate House, our two-storey, luxury suite, has been thoughtfully designed and transformed with wedding parties in mind.

Drenched in natural light, overlooking the swimming pool and panoramic views of the Blackall Range, it is the perfect backdrop. Open and airy spaces with muted white and cream tones, decorated with delicate, tasteful and homely country style, the stage is set for a truly beautiful start to your big day.

The upper level boasts 5 bedrooms, 3 bathrooms, 2 full kitchens, air conditioning, a fireplace, and 2 large living spaces. Giving your bridal party all the space you need to spread out, sip mimosas and enjoy getting ready together. Our purpose-designed makeup room, fitted with 3 full stations and front-lit mirrors makes it a breeze for your hair and makeup artist to set up and do their magic.

The lower level of The Estate House is a stylish and moody setting for any groom's or second wedding party to get ready. The newly added dressing room has an elegant whiskey room vibe, rich furnishings, air conditioning and mini-bar. Complemented further by the library and fireplace, dining room and TV and games room, complete with a Pool Table, Darts and Ping Pong table.

The lower level has been consciously designed as a communal space, perfect for a post-reception nightcap or an early morning breakfast/coffee with your guests who stay onsite.

A 2-Night Stay in the Estate House coupled with a gourmet wedding breakfast box from Maleny Food Co. is included in all our Wedding Packages.



Photography: Graeme Passmore



GET READY IN STYLE



Photos: (1) Luke Mears Photography | (2) Bulb Creative | (3) Graeme Passmore

THE PARLOR or THE STUDIOS

effortlessly refined, perfectly private

THE ESTATE HOUSE - THE PARLOUR

Located on the bottom level of The Estate House, featuring a sitting room with library and fireplace, brand new dressing room with mini bar and whiskey room vibes and a games room decked out with a pool table, dart board and ping pong table as well as a smart TV.

It is the perfect space for your wedding party to gather and celebrate before the festivities of the day begin.

THE STUDIOS

Nestled in a quiet corner of the Estate, The Studios offer a laid-back yet elevated space, thoughtfully designed for the grooms or any secondary wedding party to prepare in comfort and style.

Positioned away from The Estate House and other accommodation, The Studios provide a calm and private setting — ideal for morning rituals, shared moments, and capturing effortlessly styled portraits before the celebration begins.

Each of the three suites is styled like a spacious double hotel room and features two queen beds, a private bathroom, and a well-appointed kitchenette with everything you need for a relaxed stay. Thoughtfully designed interiors pair antique details with warm tones and natural textures to evoke a sense of understated luxury.

Sleeping up to 12 guests across all three suites, The Studios also make an ideal accommodation option. Available as an exclusive add-on to your wedding package, it's the perfect place to start the day in comfort, privacy, and impeccable style.



PHOTOGRAPHY & VIDEOGRAPHY

Explore the grounds and be engulfed by its raw beauty.

PHOTOGRAPHY LOCATIONS

Every corner of Maleny Country Estate is a canvas—crafted by nature and curated for unforgettable moments. With 185 acres of breathtaking hinterland, the estate offers an abundance of locations for timeless wedding photography, no matter the season.

Golden light spills through ancient fig trees, sunsets melt into soft pastel hues across the Blackall Range, and dappled sunlight filters through the rainforest canopy—creating natural light leaks and cinematic backdrops at every turn.

Our tree-lined driveway, heritage rock walls, serene dams, and rolling hills offer variety and romance, while the shifting seasons add their own touch of magic. In spring and summer, expect lush greenery and vibrant florals; in autumn and winter, warm tones of amber, rust, and gold blanket the estate in a vintage, European glow.

Photographers and videographers are welcome to visit ahead of time to explore the grounds and plan their perfect shot list. And if you're still searching for the right creative team, we'd be delighted to recommend some of the incredibly talented professionals we've worked with.

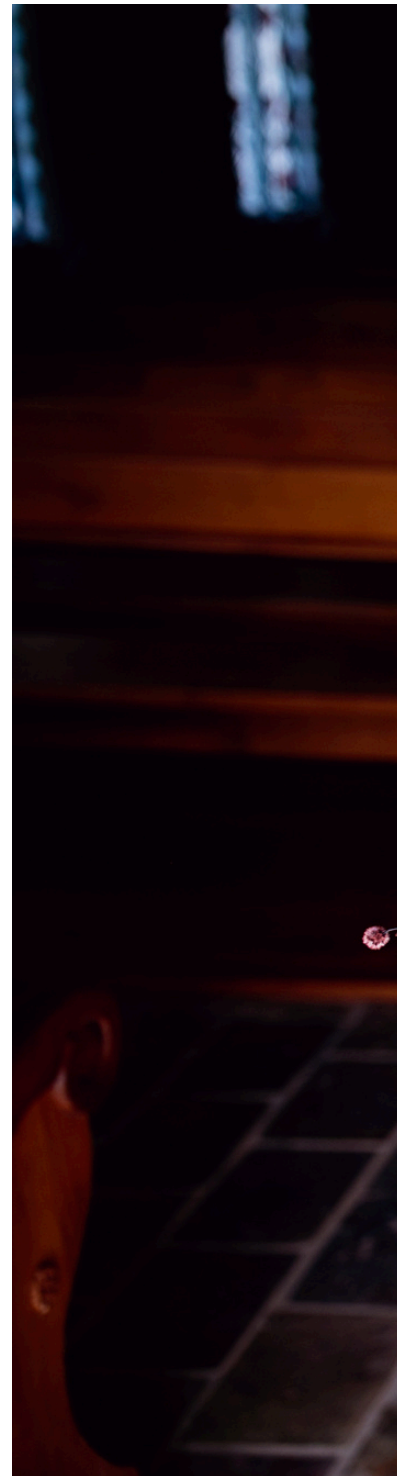




Photo: Life and Love Photography | @lifeandlovephotographybyleeb

OUR SPACES

explore just how much our estate has to offer

Your wedding day is more than a single moment — it's a journey, a collection of moments that unfold and become lifelong memories.

At Maleny Country Estate, we invite you and your guests to experience your celebration as a seamless flow through a variety of stunning settings.

Our estate offers multiple distinctive spaces to craft your perfect day. Imagine saying “I do” on the sun-drenched lawn or within the intimate charm of the chapel, followed by a relaxed garden party with canapés on the garden terrace. As the afternoon fades, your guests can sip cocktails by the shimmering pool, soaking in panoramic views as the sun sets behind the Blackall Range. Then dance the night away in the stunning new Pavilion.

Each space is thoughtfully designed to reflect your personal style and enhance the natural beauty that surrounds you. This journey through the estate not only creates dynamic experiences for your guests but also allows you to curate moments that feel effortlessly connected yet uniquely special.

At Maleny Country Estate, your wedding is an experience — a beautifully woven story told across breath-taking locations that you and your guests will remember for a lifetime.



Photo: Jac Lee Weddings

CEREMONIES

Your next chapter starts here ...

MAKE SAYING "I DO" THE MOST BEAUTIFUL MEMORY OF YOUR DAY

Your ceremony should feel just as personal and beautiful as your love story. At Maleny Country Estate, we offer over six unique ceremony locations across the property—each with its own charm and character—so you can curate a setting that feels completely your own.

From saying "I do" beneath ancient trees or on rolling green lawns with views of the Blackall Range, to exchanging vows inside a historic hand-built chapel or beside a peaceful garden terrace—our estate offers endless possibilities to design a ceremony experience that feels both meaningful and unforgettable.

And if you've found a little corner of the property that speaks to you—we'll do everything we can to make that dream a reality.

Queensland is notoriously unpredictable with its weather, in the unfortunate event of wet weather outdoor ceremonies will be moved into The Chapel or The Pavilion.



THE CHAPEL

St Albertus Chapel is our most traditional ceremony space, rich in history and full of character. With its soaring ceilings, hand-carved timber detailing, original stained-glass windows, and romantic bell tower, it delivers timeless European charm. After you've said "I do," ring the chapel bell and step into the manicured gardens and stone courtyard for your first photos as newlyweds

GARDEN TERRACE

Framed by towering Poinciana and Pecan Nut trees wrapped in soft fairy lights, the Garden Terrace is a dreamy outdoor ceremony location with a natural, sun-dappled glow. Overlooking the gardens and dam, this space is effortlessly beautiful and endlessly adaptable to suit any style or season.

THE LOOKOUT

Tucked beneath a striking Poinciana tree and perched just above the Garden Terrace, The Lookout is perfect for smaller, more intimate ceremonies. With sweeping valley views as your backdrop, it offers a private and picturesque space to exchange your vows in nature.

THE UPPER LAWN

Expansive and elevated, The Upper Lawn delivers panoramic views of the Blackall Range and beyond. It's a purpose-designed blank canvas where the natural beauty does the heavy lifting—perfect for large groups and showstopping ceremony setups without compromise.

THE LOWER LAWN

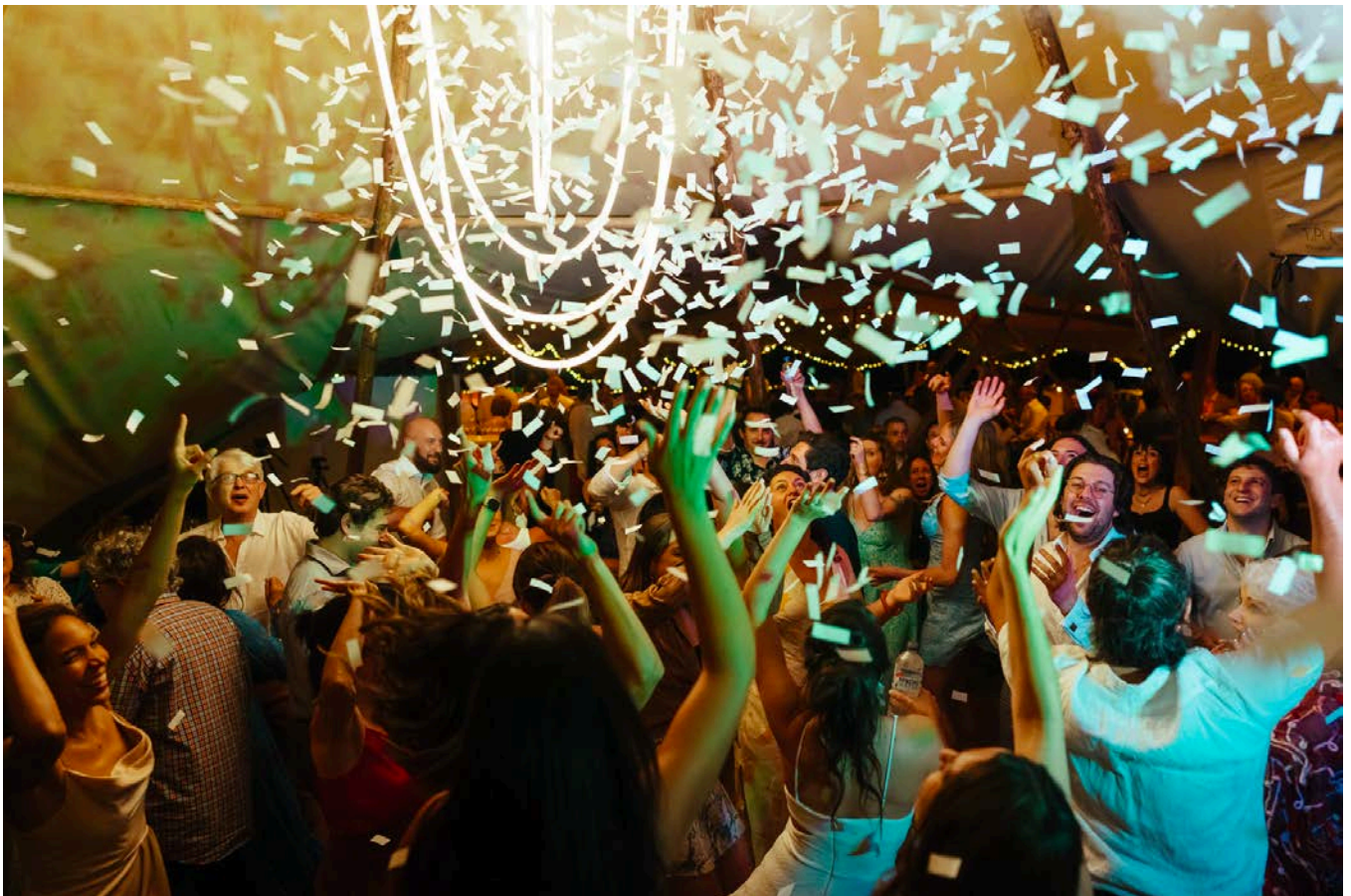
Nestled in a secluded paddock beside a grand Red Bean tree, The Lower Lawn offers the same breathtaking views as the upper level but with a more intimate and peaceful feel. With vistas across the dam and forest, this is a serene and soulful setting ideal for mid-size groups or couples wanting a quiet moment in nature.

THE PAVILION

With soaring 7.4m ceilings, crisp white interiors, and wraparound black-framed glass, The Pavilion offers a modern, architectural ceremony space with uninterrupted views of the Blackall Range. Positioned beside the pool and The Estate House, it's a beautiful option for indoor ceremonies without compromising on atmosphere, natural light, or style. The spacious covered veranda adds a seamless transition to the outdoors, making it perfect in any season.

Note: If using The Pavilion for your ceremony space, it cannot be used also for your Reception space.





RECEPTIONS

Get the party started

Whether you're envisioning an elegant sit-down celebration beneath soaring ceilings or a relaxed, open-air soirée under the stars, Maleny Country Estate offers the perfect setting to bring your reception to life.

From The Pavilion—our purpose-built, light-filled reception venue with panoramic sunset views—to The Lawn, a spacious marquee-ready expanse ideal for everything from chic cocktail parties to festival-style gatherings, each space has been designed to offer complete flexibility without compromising on luxury.

Create a reception that's entirely your own, surrounded by the natural beauty of the hinterland, and the thoughtful details that elevate every moment.

Our unique location allows for groups from 2 to 250+ people*.

THE PAVILION

Our signature reception space, *The Pavilion*, is purpose-built for unforgettable celebrations. Positioned beside The Estate House and overlooking the sparkling pool, this elevated venue offers uninterrupted views of the hinterland and delivers one of the best sunset outlooks on the estate.

Thoughtfully designed over four and a half years, The Pavilion was created with weddings in mind — a beautifully finished blank canvas ready to be styled to suit your vision. Clean architectural lines, crisp white interiors, and soaring 7.4-metre pitched ceilings create a sense of light and space, while wraparound black-framed glass doors open onto a spacious covered veranda. From here, your guests can take in panoramic views of the Blackall Range as the evening unfolds.

Every detail — from the natural stone and timber features to the flow of indoor-outdoor entertaining — has been curated to complement the surrounding landscape and allow for effortless transitions throughout your day. With capacity for 250+ guests, The Pavilion offers both scale and intimacy, delivering a timeless, elegant setting for the reception of your dreams.





THE LAWN

Framed by sweeping views of the Blackall Range and the rolling green hills of Witta, the Grande Lawn offers an expansive blank canvas with breathtaking natural beauty at every turn.

Purpose-designed for marquee and Sperry Tent celebrations, this space is fully equipped with road access, flat ground, and essential water and power connections—making it as practical as it is picturesque.

From intimate elopements to grand celebrations of up to 250+ guests, the Grande Lawn invites couples to craft a celebration that reflects their unique style. Whether you're envisioning long tables under a canopy of festoon lights, food trucks and lawn games at golden hour, or a luxurious marquee filled with chandeliers and fine dining — the space adapts beautifully, without compromise.

Perfect for relaxed cocktail receptions or refined sit-down affairs, the Grande Lawn offers unmatched versatility, allowing you to design an unforgettable experience under the stars.

ACCOMMODATION

Why not stay the night

PLAN THE ULTIMATE WEDDING WEEKEND

At Maleny Country Estate, your wedding isn't just a day—it's an entire experience. With flexible, on-site accommodation for up to 70 guests, we invite you and your loved ones to truly settle in and make the most of every moment.

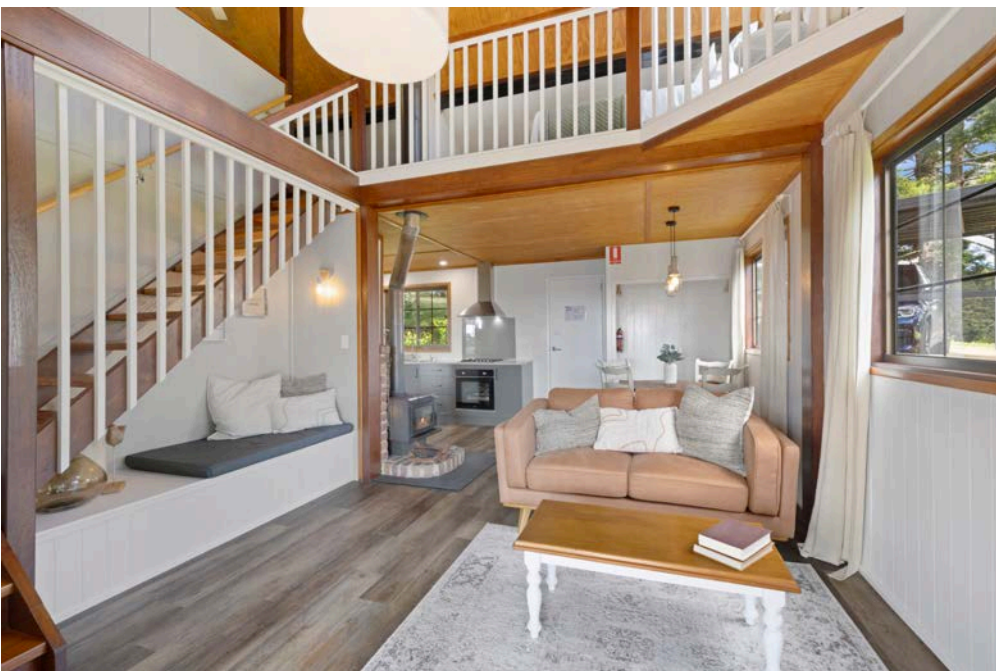
No need for designated drivers, shuttle buses, or juggling off-site bookings—your guests can stay right here on the estate, just a short stroll from the celebration. It's all part of creating a seamless, stress-free weekend where everything and everyone is in one place.

Our private cottages, studios, and chalets are thoughtfully placed across the estate, offering a sense of seclusion, space, and immersion in nature. Each is individually styled with a curated blend of modern comforts and countryside character—think crackling indoor fireplaces, inviting outdoor firepits, antique details, plush soft furnishings, and original artworks that make every stay feel bespoke.

Every detail has been considered, from premium linens and luxury amenities to fully equipped kitchens and inviting lounge spaces. Whether you're gathering for a welcome dinner the night before, a poolside recovery brunch the morning after, or simply enjoying a slow morning with coffee and the view, this is a stay that feels as special as the celebration itself.

With the option to reserve the entire estate or select individual accommodations for your group, we offer the flexibility to plan a weekend that works perfectly for you and your guests.

See our Accommodation Menu to select the options that best suit you.



REVIEWS

Nadia and Matt - November 2024



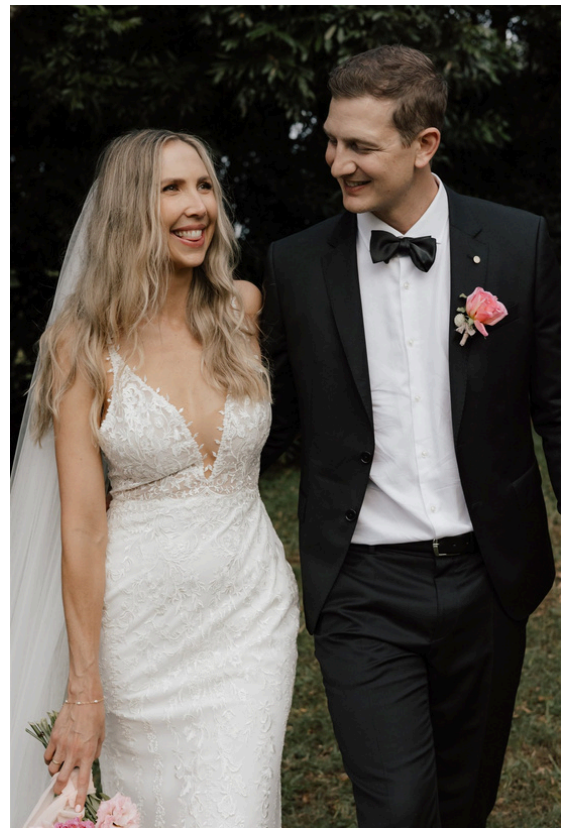
Amanda, Mic and Victoria have a slice of heaven here, that they have poured their heart into and carved themselves. The estate is truly something special, made with love, and feels like home.

My partner and I booked this wedding venue (site unseen) because Amanda made such an impression on me (over email!) - incredibly out of character for me, but it was the best choice, and the estate absolutely blew us (and our guests) away. It is incredible - pictures do not do it justice - and we cannot thank them enough for all they did to make our wedding weekend unforgettable. The grounds are so beautiful, the accommodation has been thoughtfully curated to consider every need for your wedding or event, and Amanda, Mic and Victoria are there every step of the way creating absolute magic. We are incredibly grateful and can't wait to come back.

Book your wedding/event/weekend getaway here - you will not regret it!

Courtney and Dave - April 2024

"We got married at Maleny Country Estate a few weeks ago and it is hard to put into words how incredible this place is! The property itself is stunning, with tree lined driveways and mountain views. There's heaps of on site accommodation and we loved being able to have our friends and family stay all weekend with a recovery day in the epic pool and estate house on the Sunday! But what makes this venue really special is the amazing people who run it - Amanda, Mick and Victoria went absolutely above and beyond to make our day wonderful!! Navigating unseasonal rain and late changes to the plan, they worked tirelessly to ensure it all came together and far exceeded our expectations! We can not thank them enough and feel so lucky to be a part of the MCE family. We will be coming back here for weekend getaways for many more years to come!"



Kyle and Kayla - December 2021



Photo: Lauren Young Weddings | @laurenyoungweddings

"Maleny Country Estate is one of those rare places that you arrive as guests, but leave as family.

Our wedding wouldn't have been possible without the Team at Maleny country estate; Mick, Victoria and Amanda made planning a wedding enjoyable and went above and beyond to ensure that everyone was comfortable.

The venue and accommodation are breath-taking and the natural backdrop of Maleny made it feel like we had travelled back in time, when really we were only an hour out of Brisbane.

We have lost count of how many times we have been back, but we will keep going as long as they will keep having us.

With our first daughter on her way we can't wait to show her our home away from home, it's the first place we are going"

Emma and Luke - July 2022

"I don't know where to start! The grounds at Maleny Country Estate are beyond incredible, we had an intimate elopement and stayed in the Stone Cottage. The accommodation was immaculate, the amenities were second to none. The staff where absolutely beautiful, they went over and above to make sure we had the most incredible day. From our first communication to the day of our arrival Amanda's communication was so clear.

We will be booking at least one stay every year, our experience was exceptional."

Photo: Naturally Jek Photography | @naturallyjek.photography





Photo: Jackson Grant Weddings | @jacksongrantweddings

Michael and Veronica - October 2022

"We had our 180 person wedding in late October at Maleny Country Estate, the day and the site could not have been better if we tried. Amanda, Mike and Victoria worked tirelessly to ensure everything would be as perfect as could be for us, and it was. The bridal suite was luxury, with so much thought put into the final touches, including robes, a room with Hollywood mirrors for getting ready and plenty of space to enjoy the morning with family and the bridal party. The site itself was stunning, incredible views and so much greenery. If we could do it all over again we would."

Katia and Bruce - March 2022

"Bruce & I hosted our wedding day at Maleny Country Estate in March. Amanda, Mick and Victoria were absolutely amazing, they went over and above to make sure we had the most wonderful day. They answered all our questions and did all in their power to meet all of our special requests. We booked accommodation for many of our guests as well which made it even more special. The landscape and the views on the estate are absolutely breathtaking. We could not have asked for more. I cannot thank them enough for their contribution and help in making that day THE best day of our lives!"



Photo: Brisbane Wedding Photography



PRICING

Designing your perfect day starts here ...

WEDDING PACKAGES: CEREMONY + RECEPTION + ACCOMMODATION

Here at Maleny Country Estate, we do things a little differently. As we also call this beautiful estate home, we only hold one wedding per week, allowing our couples and their guests to make it a full weekend experience, from welcome dinners to recovery days by the pool, making it a wedding weekend to remember.

Wedding Packages are for couples looking for an “all-in-one-place” option and include Ceremony, Reception and some Accommodation inclusions.

Please see the next few pages for a full list of inclusions, exclusions and pricing packages. Please note the following pricing reflects the total cost including venue hire and all the inclusions per package.

Our package pricing caters to groups from 31-200 guests. If you have a party larger than 200 guests, get in touch with our team via email to discuss what you are hoping for and we will provide a customised quotation to suit your needs.

STANDARD INCLUSIONS - ALL PACKAGES

making your wedding weekend one to remember

We believe planning your wedding should be an enjoyable experience, being a family owned and operated business we aim to make each event special and offer a flexible, hands-on, personal experience. We want our couples to leave feeling like family and holding the estate and the time spent with our team as a truly treasured memory and experience.

Every event held at the estate comes with standard inclusions listed below.

BEFORE THE DAY INCLUSIONS

PLANNING SUPPORT

While we don't provide a wedding planner, our venue manager and support staff are with you through your planning process. We arrange regular check-ins at 6 months, 3 months, and 4 weeks out from your wedding date and can connect with your chosen vendors (planners, stylists, caterers, florists, etc) to help arrange bump in and out times, deliveries, set up, and any access requirements so that your day runs as smoothly as possible.

SITE VISITS

We are happy to arrange a number of site visits for you and your closest between booking and the date of your wedding. This helps with making your vision a reality when you can see your ideas in the actual space.

ITEM DROP OFF

We want your day to be relaxing, without the added stress of making sure everything is delivered on time the day of. We can work with you to arrange a time for you to deliver items to our storage area before your wedding day.

CEREMONY REHEARSAL

We welcome you to use your chosen spaces for a processional ceremony rehearsal on the morning of your wedding or on a pre-arranged date prior to the big day.

ON THE DAY INCLUSIONS

EXCLUSIVE USE

When you choose a ceremony and reception package at Maleny Country Estate you get exclusive access to your chosen function space for 48 hours. If you are wanting to hold a welcome party or recovery day in an additional function space (example: you booked a tent on The Lawn but want to use The Courtyard the following day) additional cleaning/operations fee will be applied.

Reception-only packages allow for exclusive use for the duration of your Reception event (typically 6:00pm-10:30pm) where any public accommodation guests will be restricted from the booked areas.

VENUE MANAGER ONSITE

Our venue manager and support staff live onsite and are available for the duration of your event. We are available to help you coordinate with your vendors and ensure everything is running smoothly. Our contracted security staff are also trained in First Aid and are our first responders in these events.

GUEST WELCOME

On arrival, your guests will be welcomed by one of our friendly staff who will assist with parking and guiding your guests to your ceremony location.

POST CEREMONY

Our expansive estate allows your guests to roam the grounds, play some tennis, lawn games, try their luck at table tennis and a game of pool, or simply relax while you and your wedding party get your photos. Set up a cocktail space or a break-out zone for them to enjoy and relax knowing everyone is entertained.

MALENY COUNTRY ESTATE AT NIGHT

One of the many magical things about our location and estate is the limitation of "light noise". What this means is that the night sky is spectacular without the interruption of bright spotlights and commercial lighting. When you are feeling like the darkness is surrounding you, take a minute to look up and take in the crystal clear sky speckled with stars.

The estate is beautiful by night, take a moment away from the festivities to enjoy the terraced landscapes, gardens, and lit-up trees that add a little bit more magic to your day. To make it easier for your guests to find their way back to their cars or suites, let our friendly staff assist and guide you making sure all your guests get away safely.

SHUTTLE SERVICE

For on-site accommodation guests, we offer a shuttle service the day of your wedding. Guests are given a mobile number at check-in that they can simply call or message when they are ready to come down for the ceremony and one of our friendly team will come and pick them up from their cottage and delivery them to the function space. This is also available for after the reception finishes, up to 11:45pm where our team will shuttle guests back to their booked cottages.



Exclusive- Use Packages

48 hours to plan the perfect wedding weekend

CEREMONY AND RECEPTION PACKAGE INCLUSIONS

The below packages are designed for groups from 31-200 guests that utilise the estates full grounds for the weekend. With 48 hours of exclusive-use of the event space, check-in at 12pm on a Friday and check-out at 2pm on Sunday you have the freedom to create the wedding weekend you have always dreamed of.

All Exclusive-Use packages below are for receptions in **The Pavilion only**.

STANDARD INCLUSIONS ACROSS ALL EXCLUSIVE-USE PACKAGES:

- 2 Nights Luxury Accommodation in The Estate House, including a wedding breakfast board and a bottle of sparkling delivered the morning of your wedding. (RRP: \$5800.00)
- 1 Night Luxury Accommodation in The Stone Cottage for the couple the night of the wedding (RRP: \$540.00)
- Your choice of Ceremony Location
- The Pavilion Reception space
- Mains Power Access direct to tent site (multiple 10AMP and 15AMP connections available)
- Security (*all events over 30 people require qualified security guard/s for some duration of the event*)
- Photography Locations around the estate- photographers are welcome to visit the estate prior to the day to scope locations.
- Venue Manager available onsite for the duration of your event.
- Rubbish Removal
- Mobile Cold Room
- Plating Kitchen for your mobile catering supplier
- Early Access for vendors (this is arranged through your planner with the venue)
- Cloak Room
- Dedicated space for vendors (tea/coffee, lockers/changeroom, outdoor breakroom area)
- Early Check-in / Late Check-Out

THE PAVILION - 31-90 Guests

..... **\$21,900**

In addition to the above standard inclusions, please see below inclusions for wedding groups 31-90 guests.

- 60 White Americana or 60 Oak-Crossback chairs for ceremony
- Signing Table and 2 Chairs
- 11:30pm curfew (with 11:00pm cut-off for amplified base)
- 90 Natural Oak Cross-back Chairs for reception
- 12 Standard Sized trestle tables (2.4m x 0.76m seat 8-10 guests) with standard, full drop, white tablecloths
- Pool Area Furniture (this furniture changes throughout the year and is not customizable, if you prefer to bring in your own, we can have the furniture removed from the space. It usually consists of umbrellas, cafe tables and chairs, poolside cushions/loungers)

THE PAVILION - 91-160 Guests

..... **\$24,900**

In addition to the above standard inclusions, please see below inclusions for wedding groups 91-160 guests.

- 100 Oak-Crossback chairs for ceremony
- Signing Table and 2 Chairs
- 11:30pm curfew (with 11:00pm cut-off for amplified base)
- 160 Natural Oak Cross-back Chairs for reception
- 18 Standard Sized trestle tables (2.4m x 0.76m seat 8-10 guests) with standard, full drop, white tablecloths
- Pool Area Furniture (this furniture changes throughout the year and is not customizable, if you prefer to bring in your own, we can have the furniture removed from the space. It usually consists of umbrellas, cafe tables and chairs, poolside cushions/loungers)

THE PAVILION - 161-200 Guests

..... **\$26,900**

In addition to the above standard inclusions, please see below inclusions for wedding groups 161-200 guests.

- 100 Oak-Crossback chairs for ceremony
- Signing Table and 2 Chairs
- 11:30pm curfew (with 11:00pm cut-off for amplified base)
- 200 Natural Oak Cross-back Chairs for reception
- 20 Standard Sized trestle tables (2.4m x 0.76m seat 8-10 guests) with standard, full drop, white tablecloths
- Pool Area Furniture (this furniture changes throughout the year and is not customizable, if you prefer to bring in your own, we can have the furniture removed from the space. It usually consists of umbrellas, cafe tables and chairs, poolside cushions/loungers)

Groups over 200 guests will require custom pricing. Contact our team today with your requirements.

SPERRY TENT AND MARQUEE RECEPTIONS

At Maleny Country Estate we know that some of our couples want the pure outdoor hinterland experience, and why wouldn't you with views like ours.

We have created the below packages to offer our couples the option for a premium Sperry Tent or Marquee reception to be set up on "The Lawn" to bring the outside in and offer a truly unique and stunning hinterland wedding experience.

All receptions held on The Lawn are subject to a strict 10:30pm finish time, with a 10:00pm cut off for amplified base. Due to the nature of our geographical location and the frequency of unplanned wet periods. In the event of wet weather, all events booked on The Lawn would be moved into The Pavilion.

STANDARD INCLUSIONS FOR ALL MARQUEE AND SPERRY TENT PACKAGES:

- 2 Nights Luxury Accommodation in The Estate House, including a wedding breakfast board and a bottle of sparkling delivered the morning of your wedding. (RRP: \$5800.00)
- 1 Night Luxury Accommodation in The Stone Cottage for the couple the night of the wedding (RRP: \$540.00)
- Your choice of Ceremony Location
- The Lawn Reception space
- Mains Power Access direct to tent site (multiple 10AMP and 15AMP connections available)
- Security (all events over 30 people require qualified security guard/s for some duration of the event)
- Photography Locations around the estate- photographers are welcome to visit the estate prior to the day to scope locations.
- Venue Manager available onsite for the duration of your event.
- Rubbish Removal
- Mobile Cold Room
- Plating Kitchen for your mobile catering supplier
- Early Access for vendors (this is arranged through your planner with the venue)
- Cloak Room
- Dedicated space for vendors (tea/coffee, lockers/changeroom, outdoor breakroom area)
- Early Check-in / Late Check-Out



PREMIUM SPERRY TENT PACKAGES

Create the perfect setting for your reception with a premium Oyster Sperry tent. Choose from 2 sizes 14x20m or 14x26m tent. All Sperry tent options come with a 4x4 dance floor and a premium lighting package. Including internal runs of warm white commercial quality fairy lights from the Sperry peaks to the perimeter poles and up-lights shining into the canopy to highlight the signature peaks and external festoon lighting installation. Delivery, set-up and set-down included.

Oyster Sperry Tent 14mx20m - Seated* Capacity 40-120 pax \$ Price on Request

Furniture Inclusions:

- 60 White Americana or 60 Oak-Crossback chairs for ceremony
- Signing Table and 2 Chairs
- Up to 120 Natural Oak Cross-back Chairs for reception
- Up to 15 Standard Sized trestle tables (2.4m x 0.76m seat 8-10 guests) they will need table cloths.

Oyster Sperry Tent 14mx26m - Seated* Capacity 120-200pax..... \$ Price on Request

Furniture Inclusions:

- 60 White Americana or 60 Oak-Crossback chairs for ceremony
- Signing Table and 2 Chairs
- Up to 200 Natural Oak Cross-back Chairs for reception
- Up to 20 Standard Sized trestle tables (2.4m x 0.76m seat 8-10 guests) they will need table cloths.

Events over 200 guests require custom quoting. Please contact our team today to discuss your requirements.

PREMIUM MARQUEE PACKAGES

All marquee options come with 4x4 or 5 x 7m (over 120 pax) Dancefloor and a premium lighting package. Including, internal runs of warm white commercial quality fairy lights and external festoon lighting installation. Delivery, set-up, and set-down included. Additional lighting and flooring options can be added for an *additional fee*.

Clear or White Marquee 10mx21m - Seated* Capacity 31-100 pax \$ Price on Request

Furniture Inclusions:

- 60 White Americana or 60 Oak-Crossback chairs for ceremony
- Signing Table and 2 Chairs
- Up to 100 Natural Oak Cross-back Chairs for reception
- Up to 12 Standard Sized trestle tables (2.4m x 0.76m seat 8-10 guests) they will need table cloths.

Clear or White Marquee 10mx24m - Seated* Capacity 100-160 pax \$ Price on Request

Furniture Inclusions:

- 60 White Americana or 60 Oak-Crossback chairs for ceremony
- Signing Table and 2 Chairs
- Up to 160 Natural Oak Cross-back Chairs for reception
- Up to 20 Standard Sized trestle tables (2.4m x 0.76m seat 8-10 guests) they will need table cloths.

Clear or White Marquee 10mx27m - Seated* Capacity 160- 200 pax \$ Price on Request

Furniture Inclusions:

- 60 White Americana or 60 Oak-Crossback chairs for ceremony
- Signing Table and 2 Chairs
- Up to 200 Natural Oak Cross-back Chairs for reception
- Up to 20 Standard Sized trestle tables (2.4m x 0.76m seat 8-10 guests) they will need table cloths.

Events over 200 guests require custom quoting. Please contact our team today to discuss your requirements.

EXCLUSIONS

What's NOT included in our packages ...

LIQUOR AND BEVERAGES

See our Beverage Service page for information about BYO and Liquor Licensing at Maleny Country Estate. All beverage options are not included in the package price.

ADDITIONAL ACCOMMODATION

Only a select amount of Accommodation has not been included in our packages. Our estate sleeps up to 70 guests onsite, further accommodation can be added to any booking. Please see our Accommodation Menu for options you can add on.

EQUIPMENT HIRE

The hire of equipment not listed in the package inclusions list is the responsibility of the customer. The customer must organise vendor, quantities, style, delivery, and collection of any additional equipment. This includes, crockery, cutlery, glassware etc.

PLANNING | STYLING | DECOR

Wedding Planners, Stylists, Florist/Florals, and Décor are not included in the package pricing and are the responsibility of the customer. The customer must organise vendor, quantities, style, delivery, and collection of any additional equipment. We have a number of preferred suppliers and known suppliers we work with and would be happy to connect you with any vendors you may need.

CATERING AND EVENT STAFF

Maleny Country Estate does not have onsite catering or catering/bar service staff, we want our customers to be able to bring in exactly what/who they want for their special day. All events serving alcohol must have RSA Certified staff to cater beverage service at their event.

LIGHTING

Specialty lighting is not included in standard pricing. If any additional lighting is desired, please get in touch and we can discuss set-up/set-down costs and what availability we will have.

MUSIC AND ENTERTAINMENT

All music and entertainment and associated equipment is the responsibility of the customer to engage, book, plan, organise and communicate with the venue for any event.

FREEZERS

We do NOT have an onsite freezer for guest use, if you need this, your supplier will need to provide this.



MICRO-WEDDINGS

Just your nearest and dearest

For those who believe in doing things a little differently — our Micro Wedding package is designed for couples who want an intimate and elevated celebration with only their nearest and dearest.

Curate a day that reflects your unique style with the freedom to choose your own planner and stylist. Say your vows in one of our beautiful ceremony locations — whether that's beneath the towering trees on the lawn, inside the heritage charm of The Chapel, or under the open-air Courtyard Pavilion — before hosting a relaxed and elegant reception with those who matter most.

This package is exclusively available for mid-week weddings (Tuesday–Thursday) and is perfect for celebrations of 11–30 guests (including children).

Weekday Tues-Thurs Only \$12,500

Inclusions:

- 1 Night Stay in The Estate House (sleeps 10 maximum) with early check-in of 8:30am and late check-out of 11:30am
- 1 Night Stay in The Stone Cottage for the couple with early check-in of 8:30am and late check-out of 11:30am
- *Exclusive use of the booked space and its immediate grounds for **6 hours** (including set-up/set-down time)
- Choice of Ceremony Space - The Chapel, The Lawns, The Pavilion
- Reception Space - The Pavilion Only (strict 10:00pm close)
- Furniture Package
 - 4 Standard Trestle Tables with White Floor Length Table Cloths
 - 30 White Slatted Americana Chairs or 30 Oak Cross-back Chairs for Ceremony
 - 30 Oak Cross-back Chairs for Reception
 - Signing Table and 2 Chairs
- Pre-arranged run through on a weekday prior to your wedding
- Planning Support: Meetings with Venue Manager 3 months prior and 1 month prior
- Access to Photography Locations around the estate
- Rubbish Removal

Optional Extras: (additional fees apply)

- Additional Furniture or styling items (tables, linens, umbrellas, bars etc. pricing on request)
- Additional Guest (max 35 total): \$200 per person
- Extra event time: \$350/per hr (Maximum 2 hours extra - not past 10:00pm)
- Discounted rates for any additional accommodation
- Option to add Clear or White Marquee (10x9m) or Round Sperry Tent (10m) on The Lawn (pricing on request)

Note: This package does not include catering, florals, staffing, planning, or equipment hire outside of the listed inclusions.

ELOPEMENTS

an intimate affair

Is your idea of the perfect wedding day just you and your partner and a very select few of your nearest and dearest?

Maleny Country Estate is the perfect venue for you. From our traditional stone cottage, 100+ year old fig trees, open paddocks and tree lined entryways the options are endless to create your magical and intimate setting to say "I Do".

MAXIMUM GUESTS: 10 INCLUDING THE BELOW:

- *Couple*
- *Celebrant*
- *Photographer*
- *Videographer*
- *Witnesses*
- *Select family members*

TUESDAYS AND WEDNESDAYS ONLY\$2000

Elopements can be held at any time from Tuesday to Thursday year-round. Hoping for a weekend date? We always keep some weekend slots available throughout the year, email us if you have a special request or special date.

STANDARD ELOPEMENT CEREMONY INCLUSIONS:

- *1 Nights Accommodation in The Stone Cottage for the couple (2 guests max.)*
- *Exclusive use of selected space for 2 hours (extra hour for set-up/set-down)*
- *Signing Table and 2 Chairs*
- *10 Oak Cross Back Chairs*
- *Choice of The Chapel, The Pavilion or a selected Outdoor Space*
- *Extra hour for event \$150/hr*
- *Access to Photography Locations around the estate*
- *Discounted rates for other accommodation add-ons*



Photo: Naturally Jek Photography | @naturallyjek.photography

CEREMONY ONLY

let the hinterland's beauty do the heavy lifting

For couples dreaming of a spectacular ceremony without the full-day event, our Ceremony Only option invites you to make the most of Maleny Country Estate's breath taking surrounds.

With 185 acres of private hinterland and a curated collection of ceremony spaces, each setting offers something truly unique — from sweeping views across the Blackall Range on our ceremony lawn, to the romance of our purpose-built chapel, or the timeless beauty beneath century-old fig trees.

Every space is framed by gardens, dramatic trees, and rolling green hills, creating an unforgettable backdrop for your vows.

You'll enjoy 2 hours of exclusive access to the estate for your guests, celebrant, and photographer, along with dedicated onsite support to ensure a seamless experience.

For elopements, intimate gatherings, or those planning a separate location to their reception, this offering allows you to embrace the estate's raw beauty, your way. Maximum 80 guests.

Monday to Thursday \$1200.00

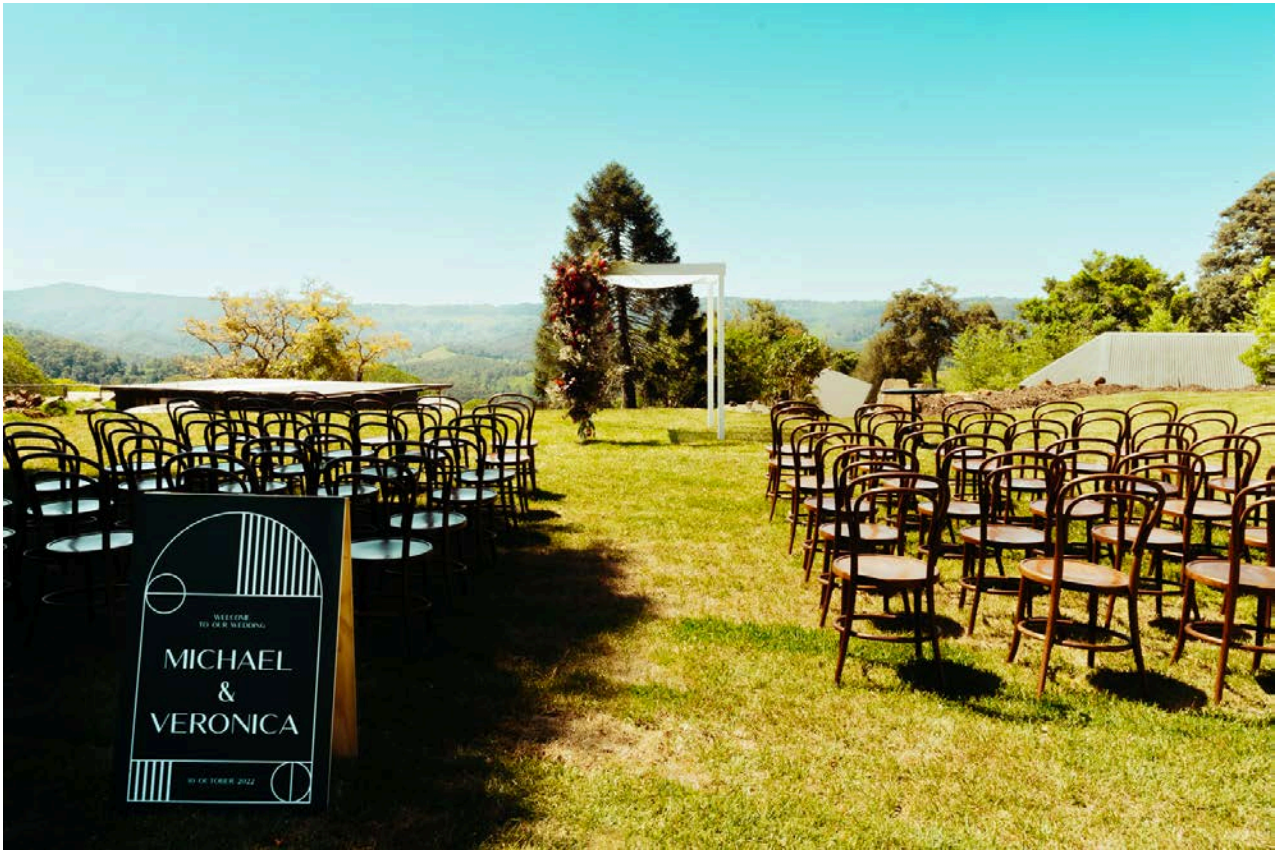
Ceremony Time: Between 11:00am-3:30pm subject to availability

Standard Ceremony Inclusions:

- Exclusive use of the Ceremony space for 2 hours. (extra hour for set-up/set-down)
- 60 White Slatted Americana Chairs
- Signing Table and 2 Chairs

Optional Extras: (Additional Cost - email us for information)

- Upgrade to Oak Cross-back Chairs \$150.00
- Additional chairs \$5.00 per chair
- Extra hour for cocktail/champagne/canapes \$200 per hour, maximum 2 hours



BEVERAGE SERVICE

BYO OPTIONS

Currently, Maleny Country Estate operates as a BYO Venue. Booked events are allowed to purchase and supply their own alcohol provided they have RSA-certified catering staff to serve alcohol responsibly.

BAR STAFF

Maleny Country Estate does not have onsite catering or catering staff. All events serving alcohol must have RSA-certified staff to operate the service of alcohol. This is typically arranged through your catering and drinks service vendor.

SECURITY & FIRST AID

SECURITY STAFF

All events held at Maleny Country Estate that have over 30 guests require RSA-certified and qualified security guards. The cost of security staff has been included in the package pricing. Contracted security guards, reserve the right to refuse and cut-off any drink service to drunk and or disorderly persons, and to remove them from site if/when required.

Security staff are here for the health and safety of all guests, staff, vendors, contractors and our property and livestock. Maleny Country Estate has a zero tolerance for abusive and aggressive behaviour and will not hesitate to evict or shut down events in any instance of this.

Should any guest, vendor or staff require First Aid during your event, our contracted security team are our nominated First Aid representatives. A number of First Aid kits and safety equipment are stored throughout the estate, should any be required our team and our security team will provide them.



Photo: Jac Lee Weddings



Photos: Life and Love Photography | @lifeandlovephotographybyleeb

A FEW SMALL THINGS

NOISE AND CURFEW

We operate on a "respect our neighbours" ethos here at Maleny Country Estate. We ask that all events held on The Lawn, that music be completely finished no later than 10:30pm, and that any music with amplified base, etc is turned off by 10:00pm. Noise must not exceed 90DB at any time.

All events held in The Courtyard reception space, music must be completely finished by 11pm and all guests not staying in on-site accommodation to have vacated by 11:45pm.

At this time, if you are not quite ready to call the festivities to an end, any guests who have booked onsite accommodation and if you have included The Estate House in your package, are welcome to return back to the Lower Estate House, where you can continue on for a drink, a dance or a game of pool. It's the perfect communal setting for you to wind the night down.

GUEST TRANSPORT

All guests arriving by car and bus and not booked in onsite accommodation, must be offsite by 11:45pm. We suggest that if arranging shuttle buses for guests that you organise a site inspection with your chosen transport provider before the date of the event and arrange for them to arrive with no less than 30 minutes pick-up window to ensure all guests leave safely.

PARKING

There is ample onsite parking for guests in our parking space and the overflow paddock, which is signed on-site. No cars are allowed to park on Reesville Road and all guests and staff must park in nominated areas and bays as directed by venue staff. All event staff/vendors must park in the upper overflow paddock when not unloading/loading.

PETS

We love pets and are happy to discuss having your furry friends as part of your Ceremony, however, they cannot stay onsite or in our accommodation suites and must have an allocated carer who will bring them to the Ceremony and take them once it is finished. They cannot stay for your Reception.

CHILDREN

Children under 16 years must be accompanied by an adult at all times. Maleny Country Estate takes no liability or responsibility for the safety of your children. All guests acknowledge our full terms and conditions of event and stays.



Photo: Jac Lee Weddings

FAQ'S

CAN I BRING MY PET?

We love pets and are happy to discuss having your furry friends as part of your Ceremony, however, they cannot stay onsite or in our accommodation suites. Our beautiful estate is also home to a large number of native wildlife including wallaby, echidna, deer, an array of birdlife, and a very healthy koala habitat. For this reason, we do not allow pets onsite outside of the Ceremony start and finish times.

CAN I ARRIVE BY HELICOPTER?

Yes, we love it when our guests get a little fancy. Get in touch with our team to discuss pricing and arrangements.

CAN I BRING FOOD TRUCKS?

Yes, you can choose exactly the vendors you want at your wedding. Our reception locations are set up with power and water to accommodate all types of catering options.

DO YOU HAVE A COMMERCIAL KITCHEN?

No, we have a plating kitchen with ample space and power (10 and 15AMP) connections as well as stainless steel bench space, refridgerators, and washing up facilities for your chosen caterers to use if required. Your catering team is responsible for cleaning up and resetting the kitchen to its arrival state before vacating the venue. Couples will be charged an additional cleaning fee if the kitchen is left dirty.

DO YOU HAVE A COOLROOM ONSITE?

Yes, we have a small mobile cool room available fo you to use. If your catering team need a full size cool room for their service a second may need to be brought in.

CAN WE CAMP OR BRING CARAVANS TO THE ESTATE?

No, unfortunately, you cannot set up tents or any caravans onsite. If you have an overflow of guests we can help put you in touch with other Accommodations in the direct area.

FINE PRINT

We respect our land, wildlife and livestock

BANNED ITEMS

Part of the beauty of living in such a magical location is nature and wildlife share this paradise with us. We respect our local wildlife and their habitats.

We also operate as a working cattle farm and have a number of horses, ponies and chickens around the estate. For these reasons we have a few items on our banned list.

CONFETTI

Confetti even when listed as bio-degradable can take months to break down and in most cases causes upset to soil quality and affects the regrowth of grass and plants. There are two options we allow; Rice paper confetti (outdoors only) and certified freeze-dried petal confetti. Bowerbird Bride and Flaurae Confetti are two approved suppliers.

FIREWORKS

Traditional fireworks are strictly banned at Maleny Country Estate. This is for the safety of our livestock. Loud noises, flames, and shock can cause distress and erratic and harmful behaviour. We are happy to discuss the use of silent fireworks and controlled displays with you and your vendor.

SPARKLERS

Sparklers can only be used outdoors and not inside any of the buildings.

Additional Note: Our property is situated in a bushfire zone, there are times of the year when strict fire bans are imposed. Fireworks will only be considered in line with current and local fire ban regulations.

SMOKING

Smoking is only permitted in zoned areas during the event. No dumping of cigarette butts anywhere but in the dedicated ashtrays. Being in a bushfire zone it only takes a single cigarette butt and light breeze to cause a bushfire. Fines apply, please read our Terms and Conditions available on our website.

ALL WEDDINGS

Due to the size and locations of our event spaces, ALL weddings and events with more than 30 people held at Maleny Country Estate must have a hired/dedicated event planner who is not a guest of your wedding. Our team can help to partner you with some of the best planning teams in the region.

All events held at Maleny Country Estate must provide a full run sheet for the event date at least 4 weeks prior to date. This run sheet must include, all vendors (with contact name, company, email and phone number), bump-in/bump-out times, delivery schedule, access requirements, equipment storage requirements. Contact us for an easy to use template.

All vendors must be paid in full according to your contracts with them for your event to go ahead. All additional requests that incur additional fees must be paid at the time of request not post your event date.

BOOKING FEE AND SECURITY DEPOSITS

A non-refundable booking fee of \$2800 is required to confirm your wedding date. This is applied to your total package price not as an additional cost. Tentative bookings are held for 5 days from the date of request and then made available to other customers if the booking fee is not paid.

A Security Deposit for every event held at Maleny Country Estate will be required, the value is dependent on your event. This is payable 30 days prior to the event date and will be refunded 7 days after the event date, less any applicable damages, fines, or fees, which will be invoiced.

PROGRESS PAYMENTS

Progress payments are due throughout the period from booking up to the date of your wedding. Progress payments are strictly non-refundable once paid and cannot be applied to an amended booking date unless written approval is provided by the venue.

JANUARY 2025 ONWARD

- **Booking Fee** - \$2800 non-refundable payment
- **12 Month Progress Payment** - 25% of the total package cost
- **6 Month Progress Payment** - 25% of the total package cost
- **3 Month Progress Payment** - 25% of the total package cost
- **4 Week Progress Payment** - Total remaining amount outstanding of the total package cost

Note: If your wedding date falls within 12 months of the date of event, a customised payment schedule will be outlined on your quote. Please see our Terms and Conditions for full breakdown.

PRICE INCREASES

Price increases are reviewed annually and applied based on the date of the wedding. Typically, price increases are applied from either January 1st or July 1st of each year and fall in the range of 3-5% increase. Our team will confirm any impact of price changes before your booking confirmation is processed. Total cost is only confirmed once a booking fee has been received and a formal quote has been signed and received by Maleny Country Estate management.

CHANGE OF DATE / TRANSFERS

Requests for date changes and transfers are not guaranteed and a non-refundable re-booking fee/administration fee of \$500 is applied.

Transfers are not arranged by, nor the responsibility of the venue. Should you wish to transfer your booking to another couple the event will need to be paid in full by the original customer and a \$500 administration fee paid. Any financial arrangements made between couples transferring are to be managed privately and outside of the venue. We take no responsibility or liability for arrangements made outside of our signed contract with the original couple and no transfers will be approved without payment in full and new contracts signed.

PHOTOGRAPHY AND VIDEOGRAPHY

Please see Section 21 - Photos and Videos - of our Terms and Conditions relating to the use and reproduction of images and videos taken, tagged, and posted throughout your event. Maleny Country Estate will for certain events, coordinate with the customer if we would like to have any marketing/content photography or videography taken by our own vendors/staff throughout your event.

TERMS AND CONDITIONS

All wedding and event bookings at Maleny Country Estate are subject to our standard Terms and Conditions, sent to every customer during the booking process. Please make sure you read and understand these T&C's prior to booking, Maleny Country Estate reserves the right to have any guest, event or group of persons removed from the Estate should these conditions be broken at any time prior or during your confirmed event date. Fines may apply. Terms and Conditions are subject to change at anytime without notice and must be adhered to at all times.

NEXT STEPS

Get the ball rolling ...

VIEW THE VENUE

Maleny Country Estate require all couples to have attended a site visit prior to making any 'Tentative' or 'Confirmed' bookings.

Contact us via email to book in your site visit at Maleny Country Estate. Viewings are strictly by appointment only. To book please email weddings@malenycountryestate.com.au

MAKE A TENTATIVE BOOKING

Once you have attended your site visit and are ready to make a booking contact us about available dates. Choose your desired available date and an tentative booking will be held in your name for 5 days .

If the 5 days have elapsed, if no booking confirmation has been made/paid for the dates will be re-opened to other couples.

CONFIRM YOUR BOOKING

Once your booking date is confirmed and the booking fee is paid and received, your wedding date is officially confirmed at Maleny Country Estate.

START PLANNING

Now the fun part begins. Start planning your dream wedding, we cannot wait to be part of your special day.

The team at Maleny Country Estate are here to help. Let us know if you need any assistance finding the right vendors to partner with from wedding planners, caterers, florist, event staff and anything else you might need.

