



CONTENTS

Welcome~

Elopements~

Intimate Stays
Eagle Knot Package

Micro Weddings~

Mini Eden Package
Garden of Eden Package

Weddings~

Ultra Eden Package

Gallery ~

FAQs ~





WELCOME

This is the perfect place to say ‘I do’ at a relaxing honeymoon, wedding destination right here in Tasmania. For more than 20 years we have been hosting couples from the mainland and from our island state looking for the perfect destination for their special day.

Couples enjoy the ‘all in one’ location and totally private access to our property when celebrating their most precious moments with their closest friends and family.

Nestled at the foothills of Tasmania’s Mount Roland, just 30 minutes from Devonport airport, yet miles from anyone, Eagles Nest Retreat offers private wedding venues with luxurious spa accommodation, and a breathtaking mountain vista. Surrounded on all sides by magnificent views and rural scenery, our picturesque location will take you by surprise. Exquisite and unique, we have a range of breathtaking options for you to consider for your wedding day. From intimate elopements, memorable small gatherings to grand elaborate weddings. Our properties are spread out across the hillside yet close enough to access if hosting a larger gathering.

Find out more about our options which include everything for your intimate elopement and microwedding to large weddings of up to 200 guests. Create your own experience or choose an all inclusive package.

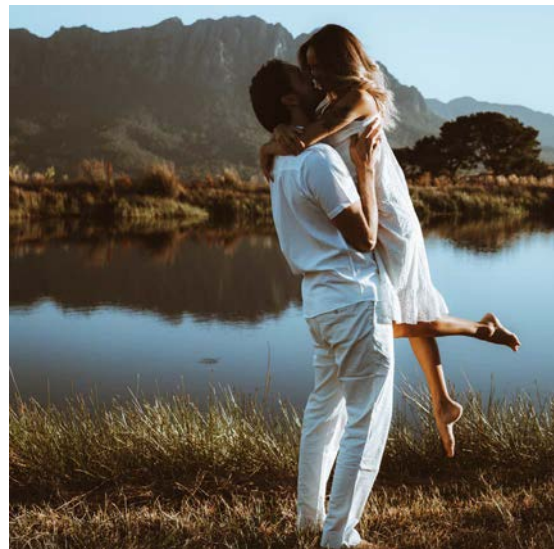
As a true, boutique destination wedding location, couples can enjoy our in-house catering with staying guests and enjoy the luxury and versatility of our unique location and facilities for their wedding stay.

We require for weddings of 11+ people that you have an onsite coordinator for your day. Most wedding coordinators offer this as part of their planning services or you can use our preferred provider.

ELOPEMENTS

2-10pp ceremony & 2 night stay

Create your own experience or choose an all inclusive package in the Nest of your choice. Couples enjoy the dreamy location and honeymoon extras with private chef catering, massage therapy and other luxury extras which can be added to create the perfect elopement in private seclusion.



Intimate Elopement Stays

Up to 10 guests including bridal couple for your ceremony and reception

2 nights for 2 people in the Nest of your choice (incl. breakfast)

Includes location and accommodation only, all elopement requirements are at the bridal couples arrangement

Add a private Dream Chef dinner, and in-house catering available for a fee

Private Massage Therapy available for a fee

Additional guests can stay in accommodation for a fee

\$500 security deposit not included

\$1500-\$2900

*location & min accommodation only see inclusions



ELOPEMENT PACKAGE

All inclusive for couples looking to have everything organised by our experienced Wedding Coordinator. Ideal for couples eloping privately.

Eagle Knot Package \$4980

2 nights for 2 people in your chosen Nest (incl. breakfast)

Location fee for your ceremony photos at your Nest

Your legal paperwork and local celebrant

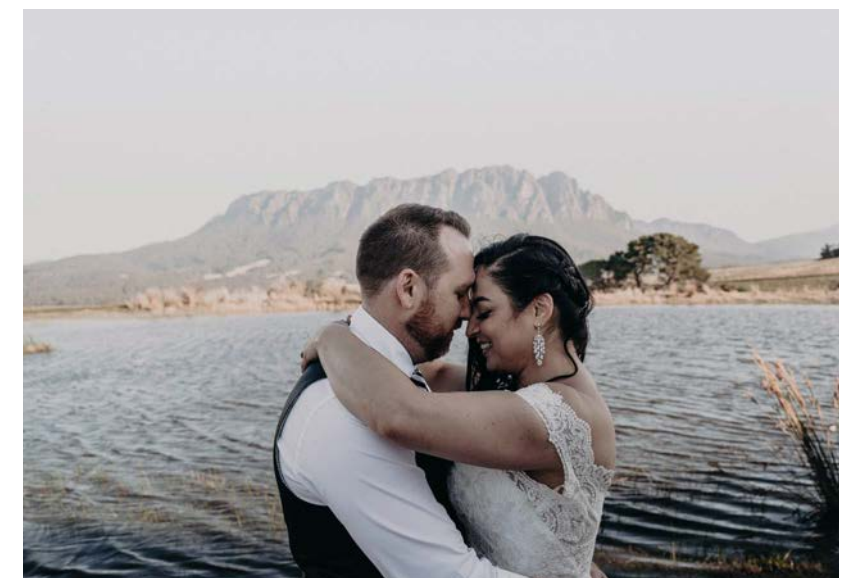
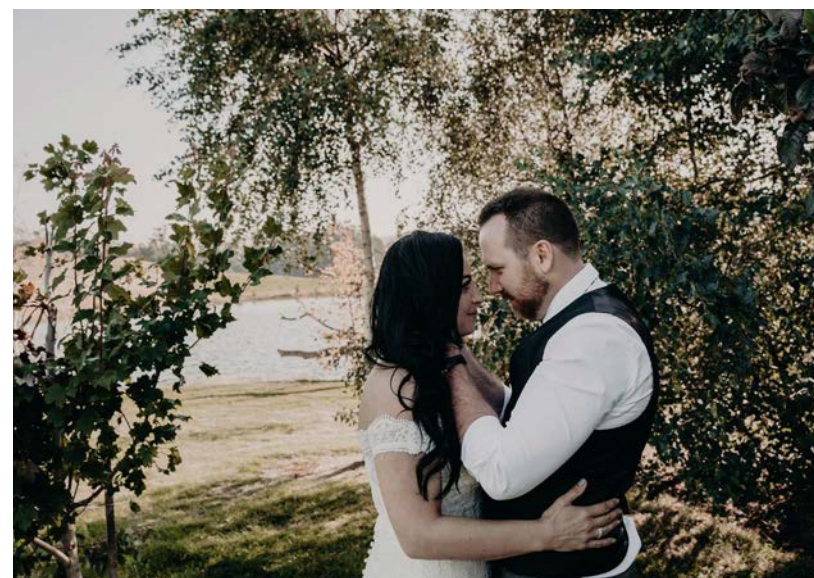
Your wedding flowers

Brides hair and make up (at your Nest)

Professional photographer includes 100 images edited on USB and available as digital download (6 photographers to choose from)

Witnesses provided (if required)

Wedding night dinner (3 course) at your Nest with our private chef



MICRO WEDDINGS

11-60 guests & the option to stay



Create your own experience for 11-60 guests or choose an all inclusive package.

With stunning mountain views and lakeside locations, couples can enjoy the privacy of having your venue all to yourselves to share with your closest friends and family.



MICRO WEDDING PACKAGE

Mini Eden Package

Max 20 guests including bridal couple (11-20pp)

A stunning mountain view experience by the lakeside at Nest II

2 nights accommodation for the bridal couple and (up to) 4 guests in Nest II (incl. breakfast)

Location fee for your ceremony and photos at Eagles Nest Retreat

Set up, styling and pack up of ceremony and reception at Nest 2 including marquee, lighting, tables, chairs, crockery, cutlery, glassware for 20 adults

Your legal paperwork and personalised ceremony with our local celebrant

Your wedding flowers (bridal bouquet and matching buttonhole)

Brides hair and make up (at your Nest)

Professional photography including 150 images edited and available as a digital downloadable gallery (6 photographers to choose from)

Grazing table for 20 guests at Nest II between your ceremony and reception

Shared feast menu or set 2 course menu for 20 guests (menu to be decided)

Wedding cake for 20 guests (flavour / look to be advised)

Additional \$500 Security Deposit not included

\$15,500

*location hire & accommodation and see inclusions



MICRO WEDDING PACKAGE

Garden of Eden Package

Max 60 guests including bridal couple (21-60 guests)

Wedding location at the Skyview Wetlands and exclusive use of all accommodation

Two nights accommodation for the bridal couple and 12 guests across all 3 Nests and The Loft (incl. breakfast)

Location fee for your ceremony and photos at Eagles Nest Retreat

Set up, styling and pack up of ceremony and reception at Skyview Wetlands including hire of bar, coolers x 3, on site toilets, marquee, lighting, tables, chairs, crockery, cutlery, glassware for 60 adults.

Your legal paperwork and personalised ceremony with our local celebrant

Your wedding flowers (bridal bouquet and matching buttonhole)

Brides hair and make up (at your Nest)

Professional photography including 250 images edited and available as a digital downloadable gallery (6 photographers to choose from)

Grazing table for 60 guests between your ceremony and reception

Shared feast menu or canape style menu for 60 guests (menu to be decided)

Wedding cake for 60 guests (flavour / look to be advised)

Additional \$1000 Security Deposit not included

\$28,500

*location hire & accommodation and see inclusions



WEDDINGS

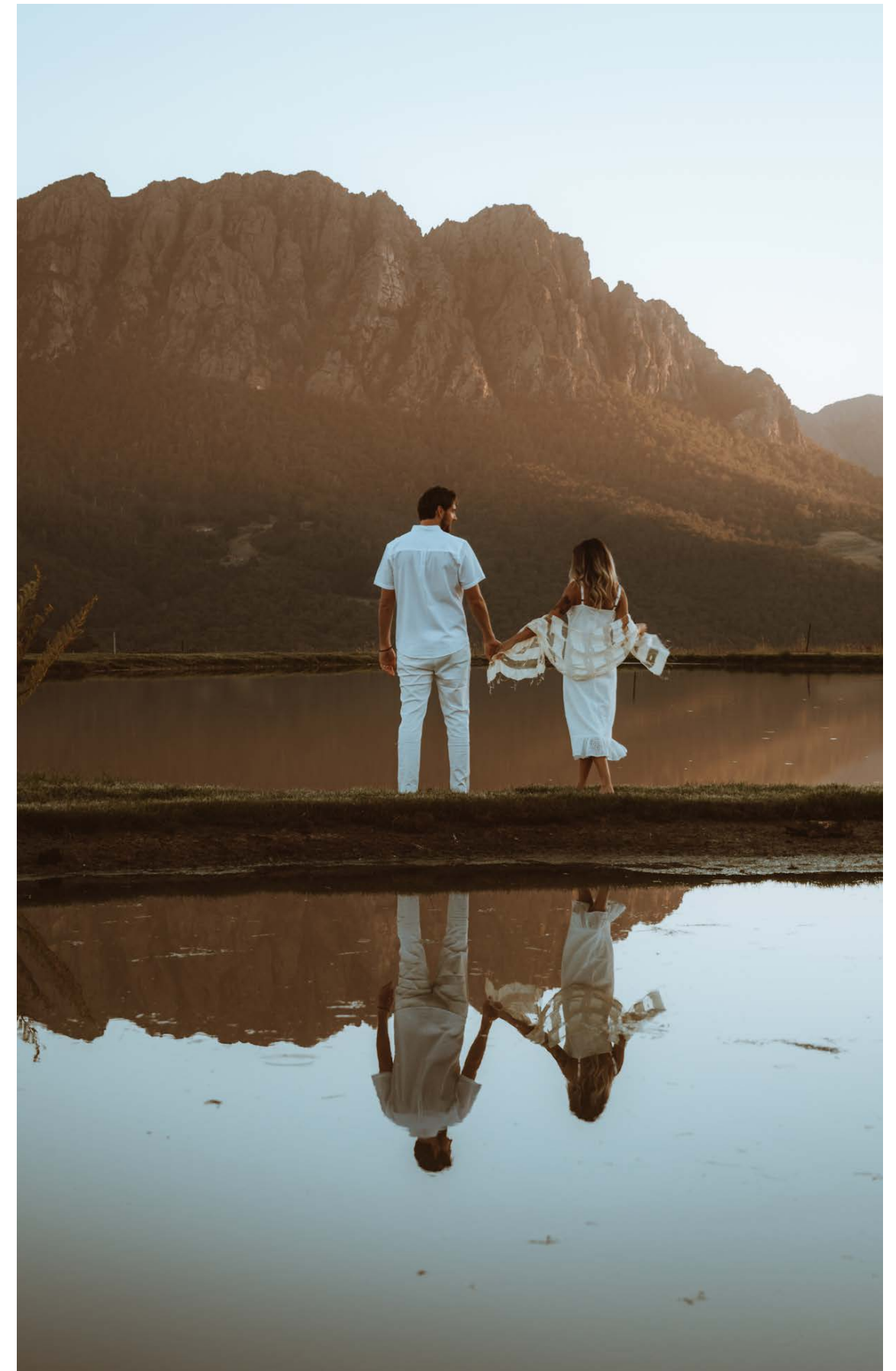
60+ guests & the option to stay



Create your own experience for 60-150 guests or choose an all inclusive package.

Our Skyview Wetlands and Barn located at the center of our property offers couples a stunning site for their special day. Exclusive use of the entire property for photography and up to 14 people staying across our accommodation, the mountain views are breath taking and the facilities are exceptional.

A limited number of weddings each year will enjoy the full facilities of our Skyview Barn while others can enjoy a gorgeously embellished marquee option on our Skyview Wetlands.



WEDDING PACKAGE

Ultra Eden Package

60+ guests including bridal couple

Wedding location at Skyview and exclusive use of all accommodation

Two nights accommodation for up the bridal couple and between 10-12 guests across the property (incl. breakfast)

Location Fee for your ceremony and photos at Eagles Nest Retreat

Set up, styling and pack up of ceremony and reception at Skyview including hire of bar, coolers x 3, on-site toilets, lighting, tables, chairs, crockery, cutlery, glassware for 100 adults.

Marquee option or Barn (limited availability) option.

Your legal paperwork and personalized ceremony with our local celebrant

Your wedding flowers (bridal bouquet and matching buttonhole)

Brides hair and makeup (at your Nest)

Professional photography including 350 images edited and available as a digital downloadable gallery (6 photographers to choose from)

Grazing table for 100 guests between your ceremony and reception

Shared feast menu or canape style menu for 100 guests (menu to be decided)

Wedding cake for 100 guests (flavour / look to be advised)

Additional \$1000 Security Deposit not included

\$36,500

*location & facilities hire & accommodation and see inclusions



GALLERY OF WEDDINGS

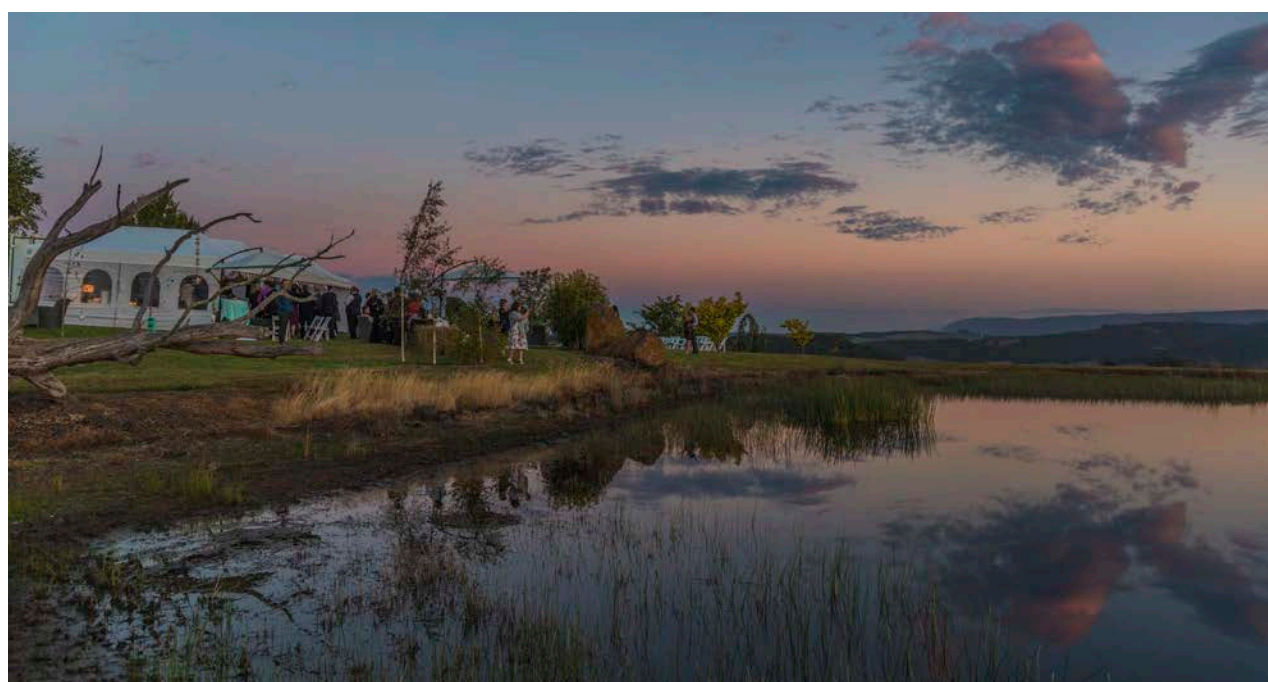












FAQs

Q Do I need to pay up front?

A We require a 50% deposit to secure your dates. The remainder of the fee is payable 30 days prior to the wedding. This deposit is non-refundable. If you are using one of our packages then we put you in touch with our partner Wedding Consultant who takes care of all the details.

Q What's the cancellation policy?

A Date changes are not permitted with the exception of our COVID policy.

100 days prior: Deposit forfeited
60 days prior: 50% cancellation fee
30 days prior: 75 % cancellation fee
14 days prior: 100% cancellation fee

Q Do you have weekday discounts or weekend pricing?

A No, our pricing remains the same regardless of the days and subject to availability. Our Eagle Knot and Eden Packages are the exception, these are based on weekdays but weekend rates are available upon request.

Q What if there are damages?

A In the unlikely event that there is damage to property it is charged to the Bridal Party at replacement value and is covered by the security deposit taken prior to the event. In the event the damage is more than the deposit this \$ will be required at replacement value.

Q Are your properties heated?

A Skyview Barn is one of the few fully heated wedding barns in Tasmania so it is a major benefit of choosing this property. Tasmania

can get cold at night during Autumn to Spring so please take this into consideration when planning your outdoor/marquee event. All our Nests are fully heated for smaller elopements and micro ceremonies.

Q Are the rentals included in the venue hire price? (some venues offer full-package services including tables and chairs, linens, tableware and dinnerware, silverware, and other adornments)

A We provide the location and specified accommodation only unless specified by the inclusions of our packages.

Q Do you provide technical equipment for the event?

A Yes in Skyview Barn for weddings of more than 60+ we provide a sound and light system.

Q Is it possible to accommodate our guests at the venue?

A All quotes are on a min 2 night basis but more accommodation for guests can be provided up to 14 people.

Q What's the accommodation capacity?

A 4 unique properties with a total capacity to accommodate 14 guests. Nest I - Guest Capacity 2
Nest II - Guest Capacity 6
Nest III - Guest Capacity 4
The Loft - Guest Capacity 2
Minimum Stay 2 nights

Q Is it possible to have both the ceremony and the reception at the venue?

A Yes, when you choose your location you may have both your reception and ceremony. Conditions apply in terms of use of the building

and what is provided in the quote. Enquire individually for specifics.

Q Do you provide a space in case of rain for the outdoor ceremony and/or reception?

A Yes, if you are hiring the Skyview Barn, or your event is less than 20 people. In all other cases, the Bridal Party is responsible for the hire of a marquee as a wet weather plan.

Q Is the venue offered for our exclusive use on the event date?

A Yes. If you book a Wedding then you have full use of the Skyview site and our full property for up to 14 guests in the accommodation. If you are having a micro elopement/intimate elopement at our Nest II then you have exclusive use of that Nest only and you may additionally book the other Nests for your wedding guests or wedding party to stay.

Q Until what time is it allowed to have loud music at the venue?

A We ask our guests to be mindful of loud music after 11pm and turn the volume down to more intimate levels. Bar closure is at 11pm or sooner, last dance at 11:30pm and all guests off site by 11:45pm.

Q Can we have a fire show, open flames, candles at the venue?

A We do not allow open flames of any kind in our Nest buildings. Candles can be used in our Skyview Barn when encased in glass. Providing there are no fire bans in place then fire pits can be used in the open areas in the grounds and away from the buildings.

Q Can we bring pets with us?

A Yes, we understand that your pets are like family and many couples

like to have them involved in their special day. We do not however allow the pets to stay overnight or inside our Nest accommodation. So please bring them for your wedding but make arrangements for their lodgings off site. We can make recommendations for them.

Q Is it wheelchair accessible?

A Yes.

Q Are Portaloos required

A Depending on the size of your wedding. Skyview has 4 toilets included in the hire, and Nest II for groups of 20 or less use the internal toilets.

Q Is there parking on site?

A Yes, parking of vehicles will take place in the open field.

Q Can our hired caterers use the kitchens in the Nests or Barn?

A Only small elopements of less than 20 may use our Nest II kitchen. Skyview Barn has a servery area for caterers to set up in, caterers need to bring all equipment with them which can be installed on site, power and water will be supplied.

Q Can we bring our own alcohol, food, drinks and/or a cake? Are there any extra charges for it? Are there any corkage fees or cake cutting fees?

A Yes you can arrange everything and there are no extra costs. Skyview has a bar and refrigeration included in the hire price.

Q Are there any people in charge of cleaning up?

A Clean up of the grounds is the responsibility of the Bridal party and their caterers and should be undertaken prior to check out. We will haul the garbage the next day as part of the fee.

We would love to hear from you.

Eagles Nest Retreat is a stunning location with endless possibilities for you.

Due to COVID-19, capacity restrictions are currently 150 guests.

See our website and social media for photos of recent weddings.

To arrange a site visit or for more information contact:

Sheree Kent

contact@eaglesnestretreat.com.au

192 Carey's Road, West Kentish, Tasmania 7306
www.eaglesnestretreat.com.au
Ph: 0429911517