

A LOOK-BOOK TO YOUR
WEDDING WONDERLAND.



FAUX FLORISTS.



SO, LET'S TALK FAUX!

Faux, is pronounced "fo".

It's a French word that meaning artificial, just to make it boujee.

Our Real Touch artificial flowers are seriously next-level. They're so realistic, even Mother Nature herself would do a double-take. These stunning blooms are here to defy the laws of nature, staying fresh and fabulous from dawn till dusk. No wilting, no drooping - just everlasting elegance at your fingertips.

The best part? They won't break the bank, leaving you with extra moolah for that honeymoon extravaganza.

At Botanical Theory, we don't do cookie-cutter designs. Oh no, we're all about that bespoke life! Our Berwick studio is our creative haven, where floral dreams are born. Show us your vision, your Pinterest boards, your wildest ideas, and we'll work our magic to turn them into reality.

Our specialty lies in artistic wedding flowers that scream "Wow, look at me!" We're all about those free-flowing styles and organic vibes. Think lush bouquets that make heads turn and centrepieces that steal the show. Whether you're a lover of

vibrant hues or you're all about that minimalistic chic, we'll make sure your floral game is on point. Consultations? We've got you covered!

Our consultation services are all about getting to know you and your unique style. Consider us your floral BFFs, here to guide you every step of the way, share our expertise, and make sure you feel like an absolute rockstar on your special day.

We've got an collection of styling treasures waiting to take your event to the next level. We'll create the floral masterpieces in our studio, install them at your venue, and whisk them away when the curtains close. No stress, no fuss - just pure floral bliss. And remember, our pricing is based on size and volume, not the botanical selection. So go ahead and dream big, because we're here to make it happen.

So, what are you waiting for? Let's create an event that's as unique as you are, filled with charm, elegance, and a touch of our playful personality.

CEREMONIAL FLOREALS



CEREMONY OPTIONS

Let us introduce our ceremony florals, but consider this as a starting point. We are thrilled to weave your unique style into these botanicals, ensuring your wedding is an extraordinary, personalized experience just for you. The sky really is the limit in terms of your ceremony florals. We welcome the opportunity to create something yet to be seen. These florals are not just a one-time affair; they love pulling double duty! After adding a touch of magic to your ceremony, they effortlessly transform into reception. As a bonus, if you prefer floral-heavy

designs over greenery, we've got you covered! There's no variance in floral selection, so let's go big and create a floral wonderland that truly represents your vision! So, why settle for ordinary when you can have extraordinary? We'll dive deep into your vision to create a floral masterpiece that speaks volumes. Let's embark on creating this moment to be the best one possible! You bring the love, and we'll bring the florals that'll make the big impression that every couple deserves.



METAL PLINTHS
"Medium Coverage"

\$1,200 + GST



GROUNDLED CRESCENT
Three meters in Length
(Can be split up and re-purposed onto the Bridal Table)
\$1,500 + GST



ACRYLIC PLINTHS
2 white acrylic plinths - \$35 ea + GST
2 x large + 2 x medium arrangements
\$1170 + GST



CLOUD STANDS
Set of 3
\$900 + GST



FLORAL TOWERS
1.8 Meters
\$1,800 + GST



ONSITE STRUCTURE
3 "Large" arrangements
\$600 + GST

CEREMONY "ADD ONS"



AISLE ENTRANCE

THIS ADD ON IS OUR MOST RECOMMENDED

To create impact these certainly do the job! Create a frame for your photographer in the big i do moments. These are usually larger pieces which can carry the statement into your reception.

{Image left | Large arrangement - \$200 + GST}

See pages 60 - 67 'Arrangement sizes' for pricing



AISLE FRAMING

START IN ONE LOCATION AND END IN ANOTHER.

Frame your Aisle with lush arrangements and have our team re-purpose them onto the guest tables or bridal table! We purely charge based on size so lets get pinning on those vision boards.

{Image left | Large Arrangements - \$200 + GST}

See pages 60 - 67 'Arrangement sizes' for pricing



TABLE

ADD A MOMENT FOR THE WEDDING ALBUM

This one is another recommendation from our team. The moment you sign the start of your forever, is a moment that will feature in your wedding album. Add some flowers to truly make the moment a picture perfect snap.

{Image left | Medium Arrangement - \$125 + GST}

See pages 60 - 67 'Arrangement sizes' for pricing



CHAIR POSIES

THESE ARE GREAT LITTLE ADD ONS FOR ELEVATED FLORALS

We've all seen these in wedding images, and there is a reason! They don't break the budget, and super cute to carry the floral story down the aisle.

\$30 each + GST



PETALS

A TRADITION THAT ADDS AN EXTRA TOUCH OF ROMANCE AND ELEGANCE

Whether artfully scattered at the base of your ceremony flowers or framing the aisle, each petal graces the ground to create a picturesque moment that's as timeless as it is captivating.

25 guests - \$130

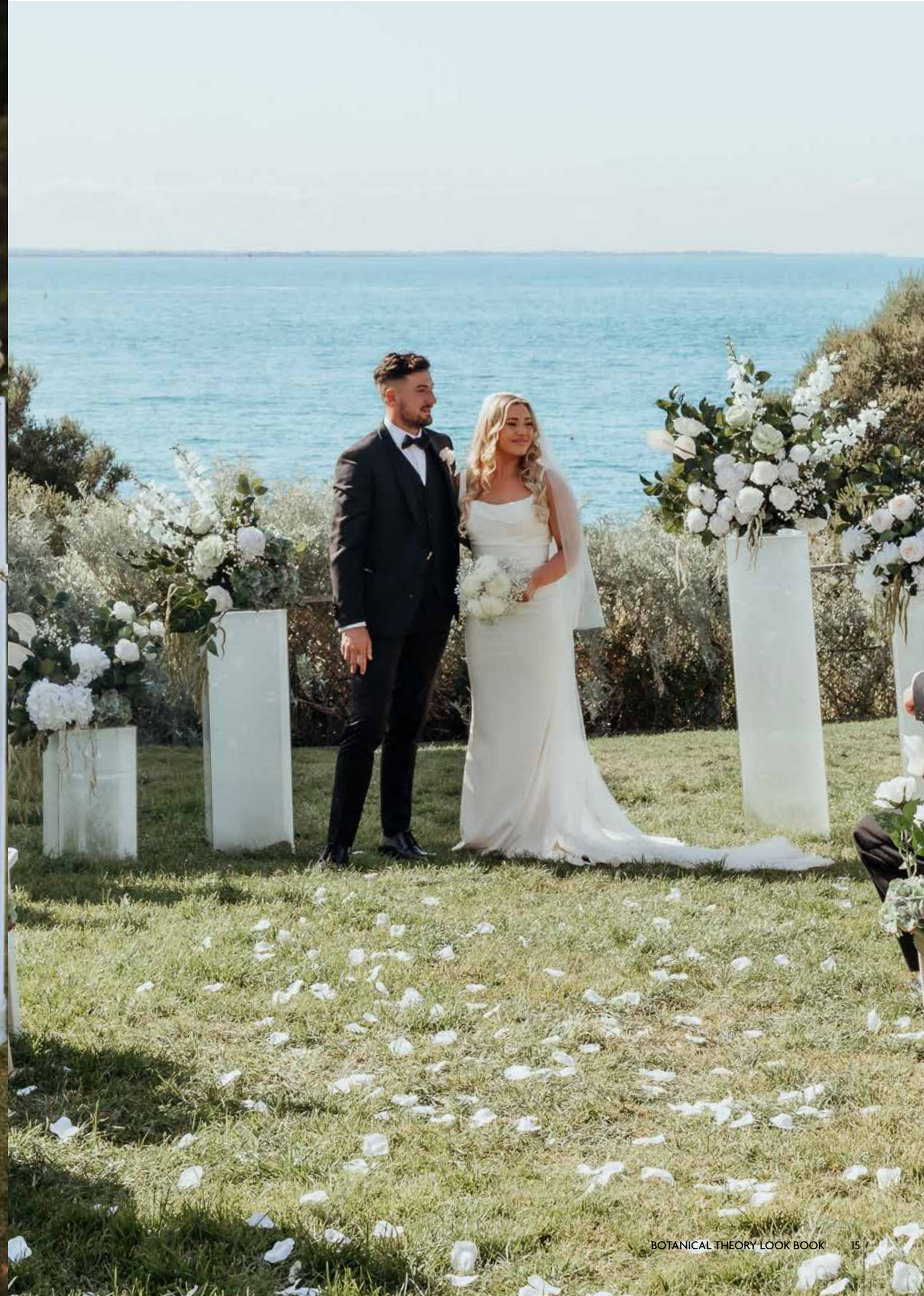
50 guests - \$200

Flower girl basket - \$35

Prices + GST









BRIDE, GROOM + YOUR SQUAD

BRIDAL PARTY

Alright, let's talk bridal bouquets! This is your time to shine. Our bouquets come in three fabulous categories.

First up, we have the Essentials bouquet, Perfect for those who want to keep it real on the budget front without sacrificing style. Next, we have the Statement bouquet. They're all about making an entrance with their larger-than-life presence and a mix of floral treasures.

And finally, the crème de la crème - our Luxe bouquet. These babies are designed to make your heart skip a beat, with their sheer opulence and jaw-dropping floral selection. Hold on tight, because heads will be turning, jaws will be dropping, and you'll be the star of the show.



ESSENTIALS

Elegant real touch roses

\$140



STATEMENT

Our most popular choice!
Trailing ribbon, an additional \$10

\$240



LUXE

For a bride with a vision!

\$300

STATEMENT

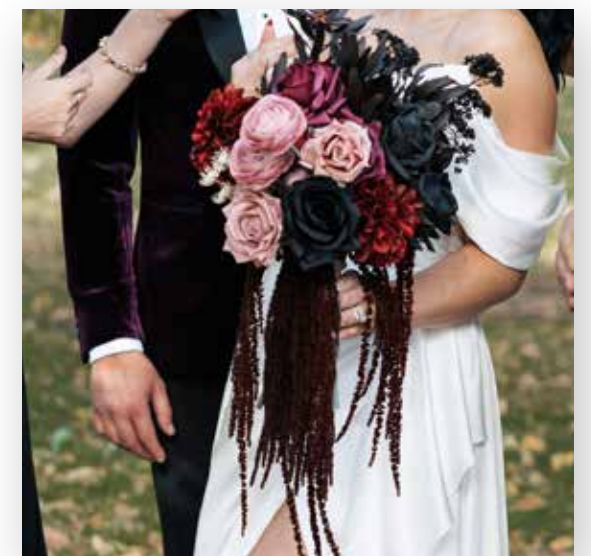
A mixture of deep burgundy's, lilac and ivory.
\$240



ESSENTIALS \$140



STATEMENT \$240



LUXE \$300 +



STATEMENT

A mixture of roses, orchids and trailing ribbon for our beautiful bride, Melissa. \$250 including her trailing Ribbon.



BRIDESMAID STATEMENT

Melissa's squad also had the "Statement" in the bridesmaids size to suit.



POCKET FLORALS

Rather than your traditional floral pin, why not make a little more of a statement?

Groom \$30 / Groomsmen \$27



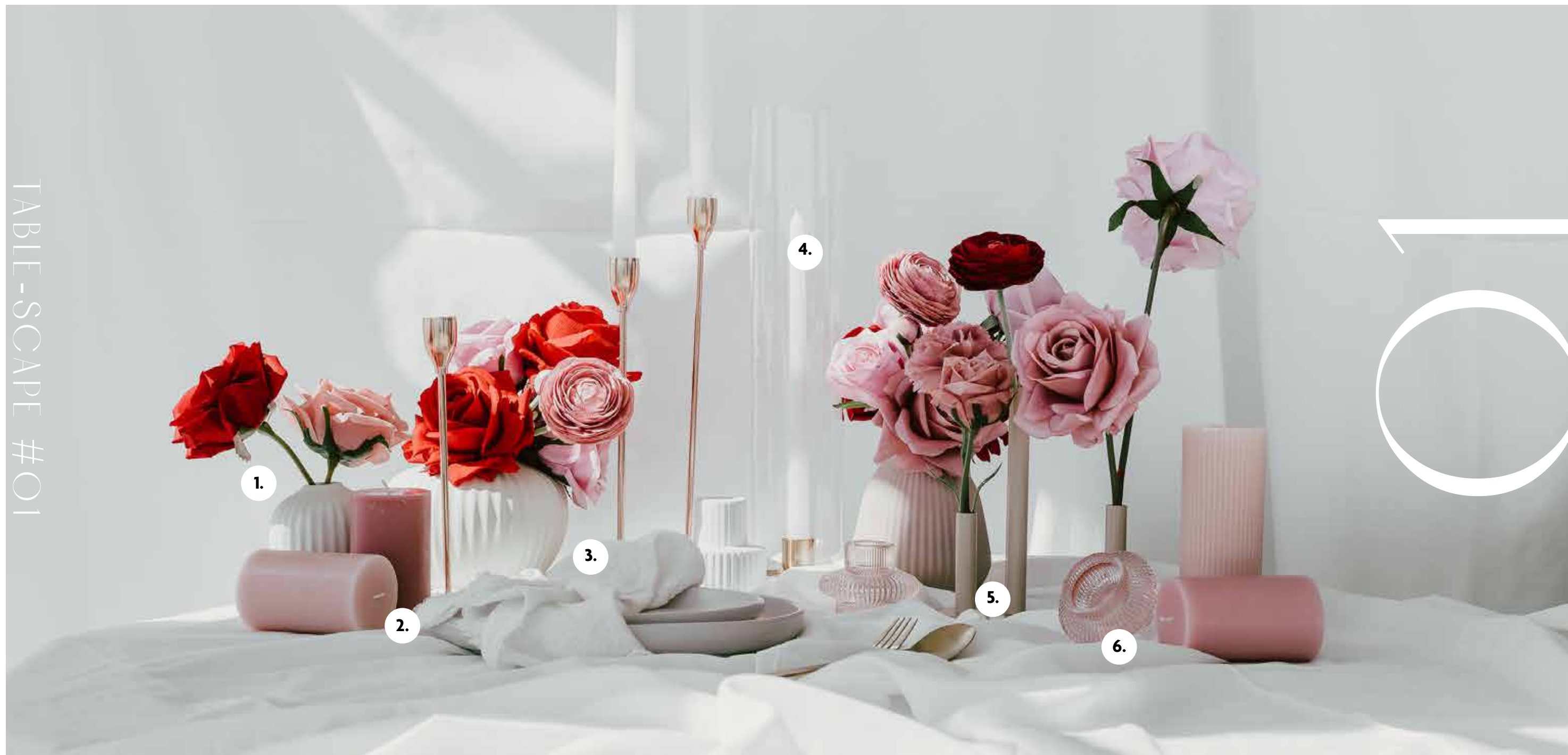
PINNED BUTTONHOLE

Safety pinned, super easy to pin!!

Groom \$20 / Groomsmen \$18

COLOURS + STYLING





1.

BUD VASES

XS, S, M sizes
3 Colours to choose from
\$8ea

2.

PILLAR

Short, Medium Tall options
Colours are endless
starting from \$7+

3.

NAPKIN

Woven Cotton, in "Milk"
9 Colours to choose from.
\$4 each

4.

OPHELIA CANDLE SET

Glass Sleeve + Base
Brass
\$15ea

5.

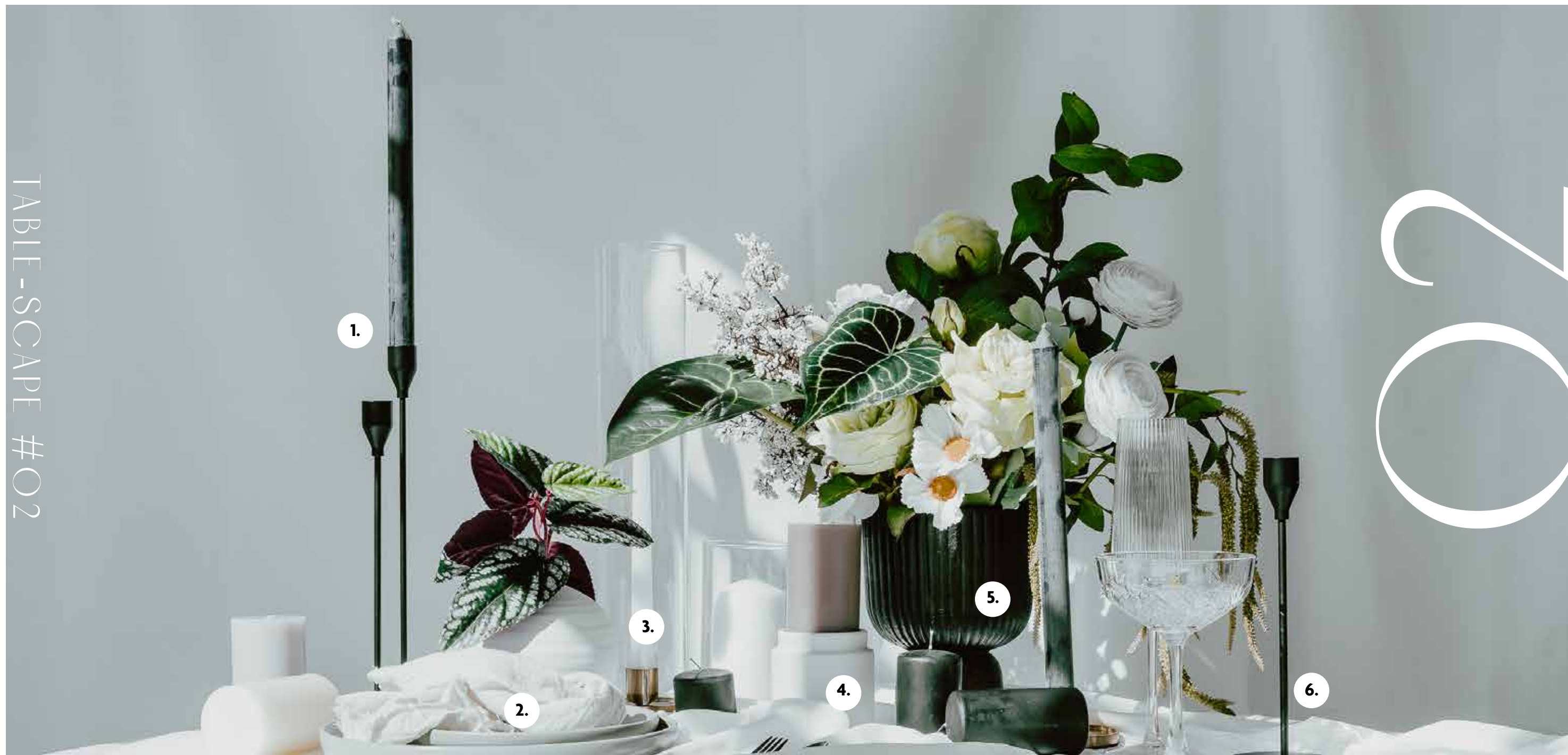
OAK LAB VASE (SHORT)

Short / Tall options
\$30ea

6.

CANDLE HOLDER

Blush
4 Colour options
\$2ea



1.

TAPER CANDLES

15, 20, 30, 35, 40cm
Colours are endless
\$3ea

2.

NAPKIN

Woven Cotton, in "milk"
9 Colours to choose from.
\$4 each

3.

OPHELIA CANDLE SET

Glass Sleeve + Base
Brass
\$15ea

4.

LINDIC CANDLE SET

Glass Sleeve + Base
White or Nude
\$10ea

5.

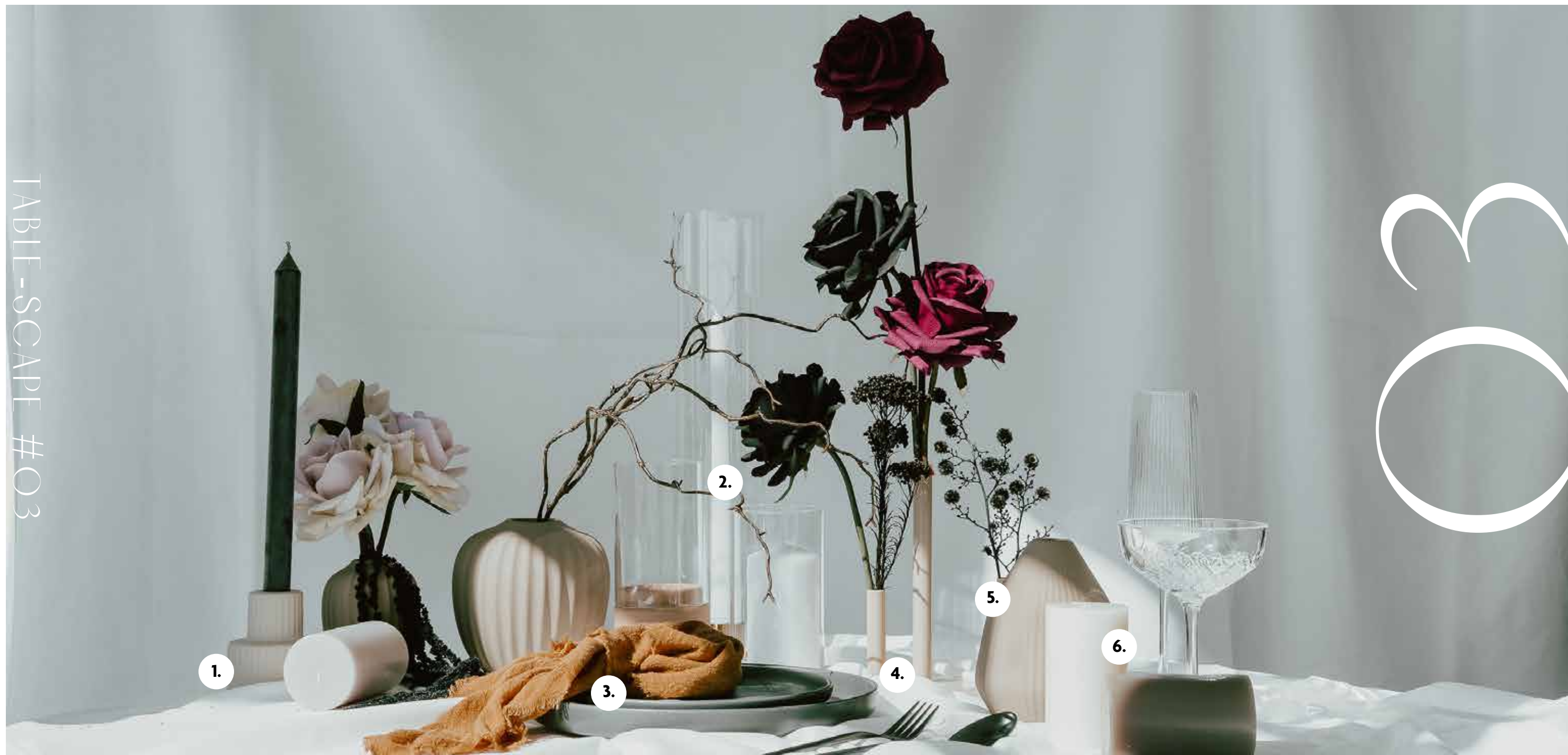
MEDIUM ARRANGEMENT

Short / Tall options
Size: S / M / L
\$70ea

6.

CANDLE HOLDER

Black
2 Colour, Gold + Black
\$5ea



1.

TAPER CANDLES

15, 20, 30, 35, 40cm
Colours are endless
\$3ea

2.

GLASS SLEEVES

Four heights
8cm + 10cm diameter
\$3-10ea

3.

NAPKIN

Woven Cotton, in "Mustard"
9 Colour to choose from.
\$4 each

4.

OAK LAB VASE (SHORT)

Short / Tall options
Florals Inclusive
\$30ea

5.

BUD VASE

XS, S, M sizes
3 Colour to choose from
\$8ea

6.

PILLAR CANDLE

Short, Medium Tall options
Colours are endless
\$7 - \$11 ea



1.

TAPER CANDLES

15, 20, 30, 35, 40cm
Colours are endless
\$3ea

2.

TABLE ARRANGEMENT

With vase
Size: Medium
\$80ea

3.

TRAVERTINE

Table numbers + Signage
Custom options available
\$5 ea

4.

GLASS SLEEVES

White pillar candle
8cm + 10cm diameter
\$12 - \$16ea (with candle)

5.

OAK LAB VASE (TALL)

Short / Tall options
Florals inclusive
\$30ea

6.

NAPKIN

Woven Cotton, in "Khaki"
9 Colours to choose from.
\$4 each

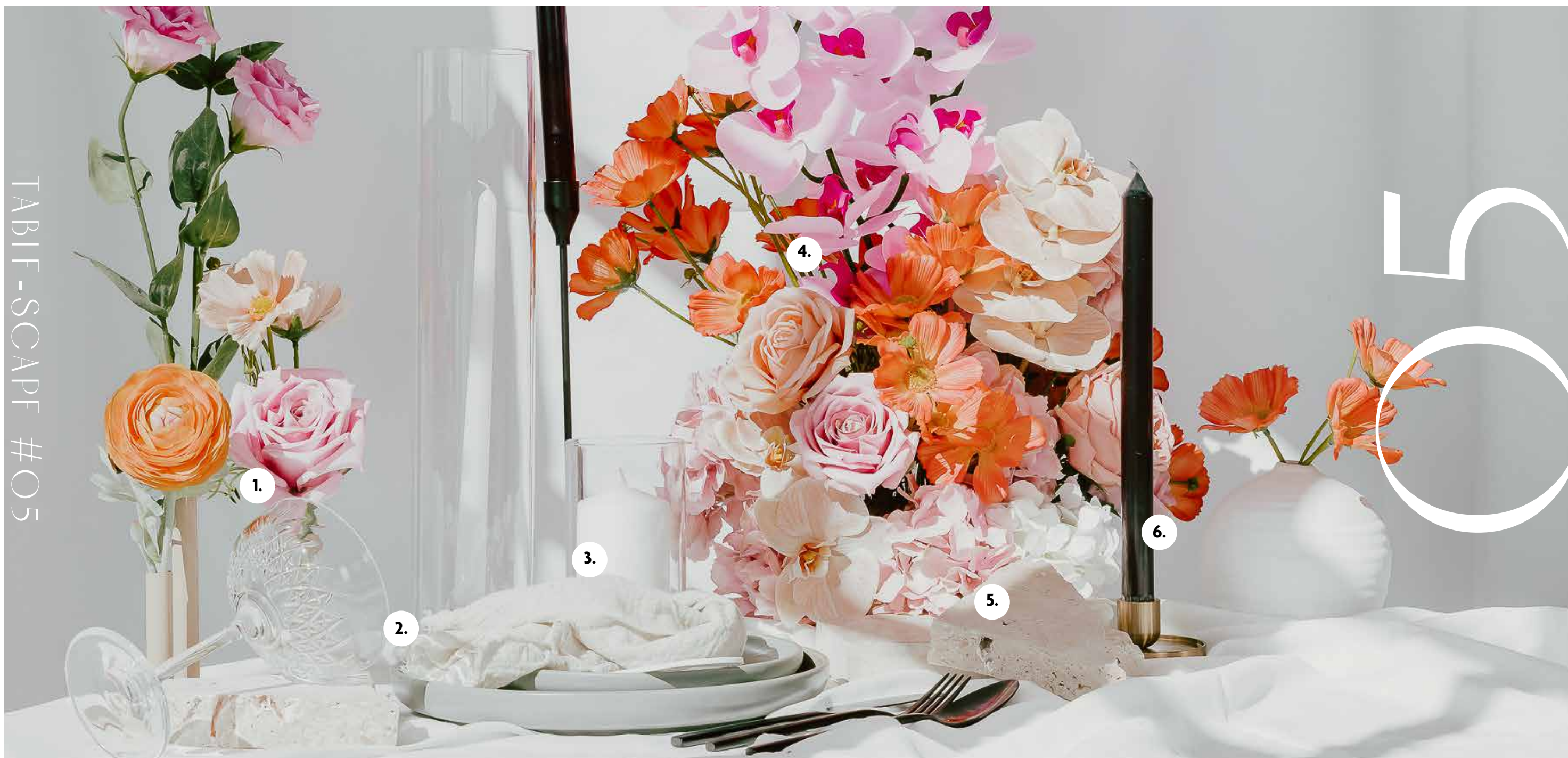


TABLE-SCAPE #05

1.

OAK LAB VASE (SHORT)

Short / Tall options
Florals Inclusive
\$30ea

2.

NAPKIN

Woven Cotton, in "Milk"
9 Colours to choose from.
\$4 each

3.

PILLAR CANDLE + SLEEVE

White pillar candle
8cm + 10cm diameter
\$12 - \$16ea (with candle)

4.

FLORAL ARRANGEMENT

Vase free
Size: Medium
\$125

5.

TRAVERTINE

Styling item
Table numbers available
\$5ea

6.

TAPER CANDLES

15, 20, 30, 35, 40cm
Colours are endless
\$3ea



PERSONALISED SIGNAGE

SIGNS + FLORALS

Let's be honest, cookie-cutter is just not our style! We're all about that bespoke life. Embrace the extraordinary, because at Botanical Theory, ordinary is not in our vocabulary!



BLACK METAL STAND

Pictured with a A1 Welcome Sign

STAND \$40 / FLOWERS \$120 / ACRYLIC \$100



BASE + ACRYLIC STAND

Grounded signage is sometimes a way to really make your signage pop! Add Candles + florals, or just leave it on its own.

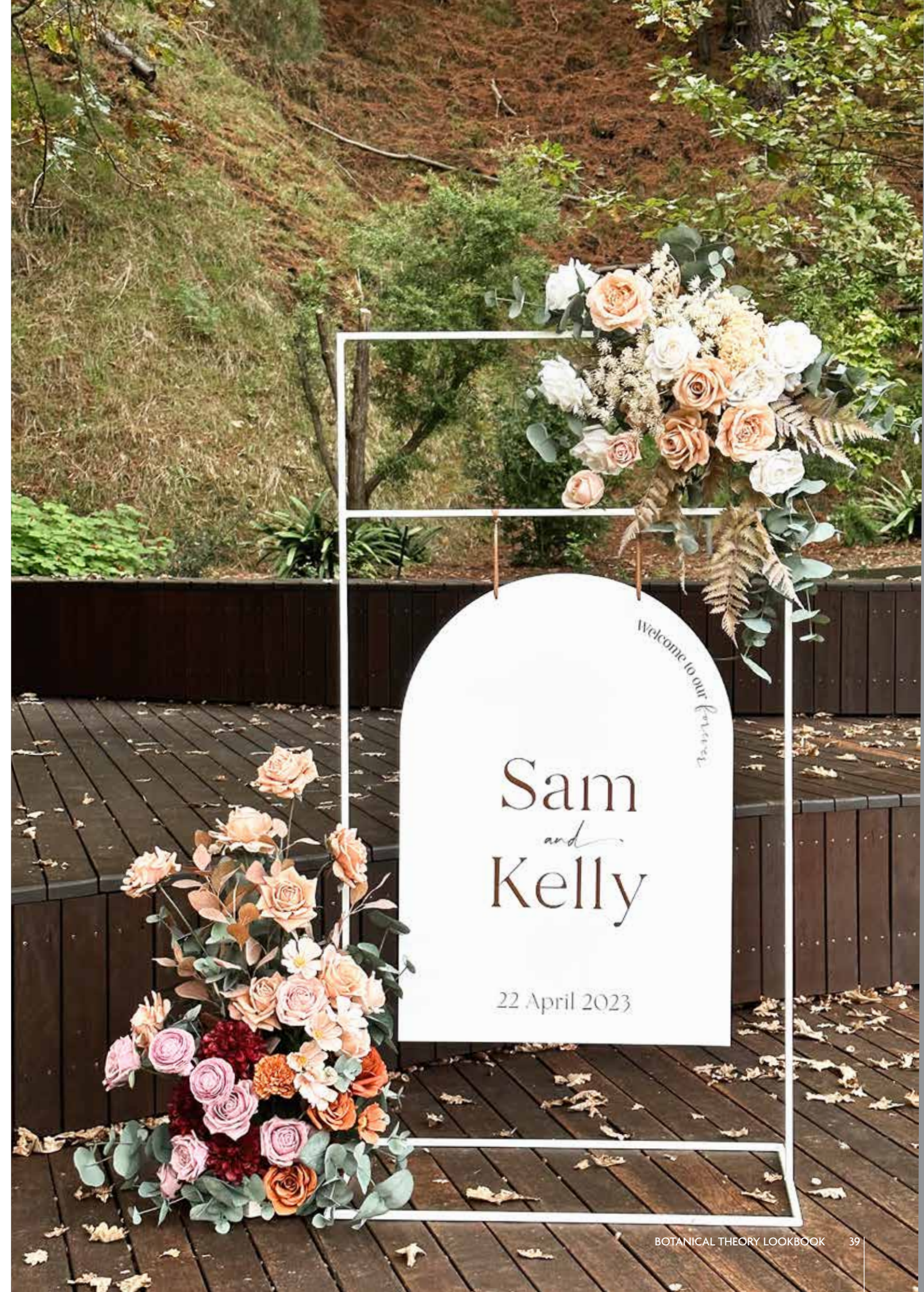
STAND \$40 / WELCOME SIGN \$100



WHITE METAL STAND

Two Arrangements \$120

STAND \$40 / FLOWERS \$120 / ACRYLIC \$100





NAME CARDS

INJECT YOUR WEDDING'S BRAND INTO EVERY DETAIL.

Introducing our exquisite acrylic name cards – each card reflects a touch of sophistication that resonates with your event's essence. These acrylic name cards provide an intimate canvas to express your style, seamlessly integrating your theme, colors, and aesthetics. Elevate your event beyond the ordinary and leave an impression with our acrylic name cards – a tangible reflection of your love story and an exquisite keepsake for your treasured guests.

\$4 EACH

PENDING THE ACRYLIC COLOUR, THIS PRICE MAY VARY.

A4 SIGNS



TRAVERTINE STONE

If Acrylic isn't your thing, and you after a more organic look, we have travertine options also!

Size: All sizes.
Starting from \$5

the bar

SPIRITS
VODKA
GIN

WINE
THE RIDDLE SHIRAZ
THE RIDDLE CHARDONNAY
PIZZINI
PROSECO

COCKTAILS
APEROL SPRITZ



BAR SIGN

From Bar signs, Well Wishes,
Personalized messages in the
restrooms - We have you covered.

Colours and Different Shapes Available
\$50 ea

HIRE OPTIONS





TABLE RUNNER

Organic Material
Available in many colours
\$35ea

OAK LAB BUD VASES

Tall and Short
Colour : Nude
\$30 each inclusive of florals



FRUIT

The ultimate styling
Accessory,
Lets chat!!

WISHING WELL

Clear, White and Nude
30cm x 30cm
\$30ea plus Decal

TRAVERTINE SLABS

Personalised Decal
\$5ea

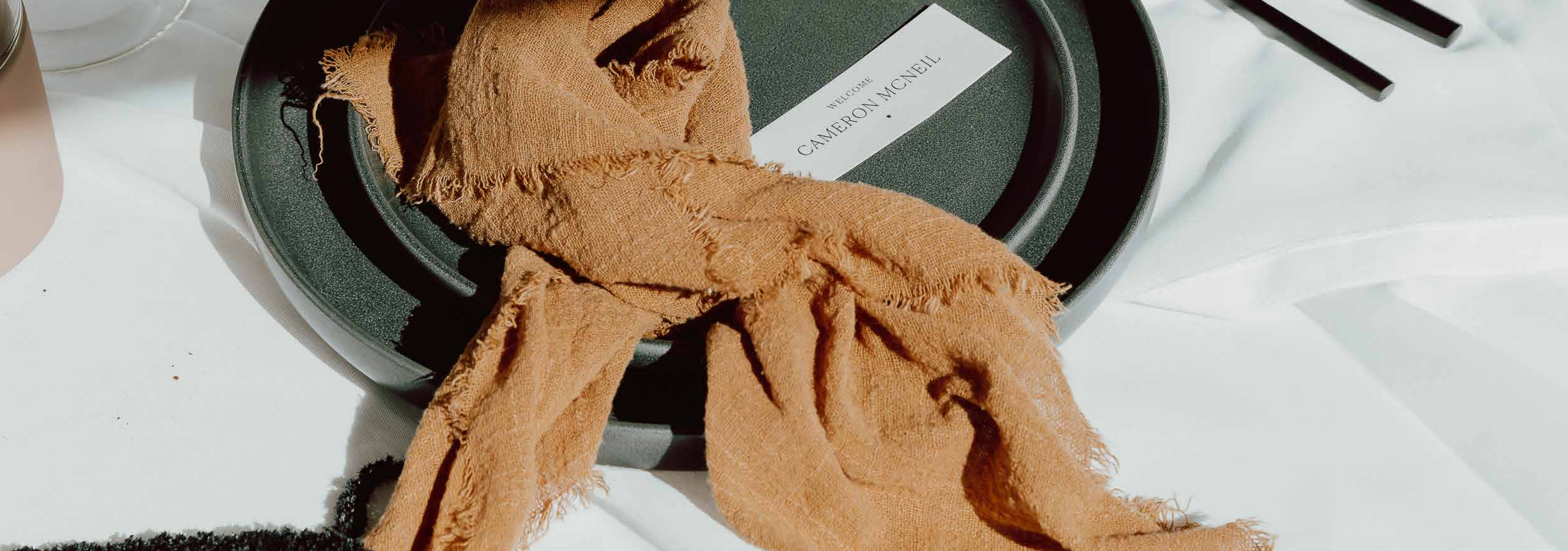


TABLE LINEN

ELEVATE YOUR TABLE DECOR

Introducing the art of incorporating vibrant hues through carefully chosen table runners and napkins. These elements not only infuse your setting with personality but also set the tone for the entire event. From bold and striking to soft and soothing, our collection offers a spectrum of possibilities to match your theme and vision. Let your creativity shine as you weave color into every detail, crafting unforgettable table styling that resonates with your guests.

TABLE RUNNER \$35 EA / NAPKINS \$4 EA
THIS INCLUDES DRY CLEANING FEES.



HANGING INSTALLATIONS

SUSPENDED CLOUDS \$150-300 EA

Or BY THE METER \$500

INSTALLATION IS ADDITIONAL



CANDLES



AN ESSENTIAL ELEMENT THAT INFUSES AMBIANCE.

Beyond aesthetics, candles hold the power to transform spaces into intimate havens, evoking a sense of tradition and romance that artificial lighting simply cannot replicate. In an age where technology often dominates, our real flame candles offer a reconnection to the timeless beauty of natural light, adding a touch of nostalgia and emotional resonance to your celebration. Elevate your event with the genuine allure of real flame candles, setting the stage for moments that are both visually captivating and emotionally profound.

SEE BELOW FOR COSTINGS



ADD A TOUCH OF BRASS

Inspired by the luxury and decadence of the Art Deco era, the Ophelia Taper Candle Holder in Brass from the Halcyon Collection combines contemporary design with classic shapes. Brushed gold finish make a glamorous statement piece for your decor.



DAY



NIGHT

LED

The allure of our real wax LED candles. Crafted from genuine wax, they emit a warm, inviting glow, reminiscent of traditional candles, yet without the worry. The flickering flame-like effect, making them an ideal choice for any setting.

...CONTINUED



LED

Opting for a classic candle-scape for your guest tables will never visually disappoint.



MIXED

Further enhance your Wedding Brand using coloured candles on your tables.
Colours: 20+



LED

Frame your Bridal Table with Real Wax
LED's in Glass Sleeves
\$5ea



MIXED

Mix it up with varying heights + styles
Colour: 20+
Individually priced



TEA LIGHT

9 hours burn time
Colours: 20+
\$1.3ea - Candle / \$3ea - Sleeve.



OPHELIA

Our Brass Base with travertine slabs..
Colours: 20+
\$15 ea inc Taper



SAND CANDLE

Want to highlight a certain area at your event?
\$8ea / White only



SAND CANDLE

If real Flame is your thing, then these are the ultimate
\$8ea / White only



LED

We do a double take every time when we see our LED's at night
\$2ea - Candle / \$3ea - Sleeve.



TAPERS

Opulence at its finest.
Colours: 20+
\$15 ea inc Taper



PILLAR

10cm, 15cm, 20cm
Colours: 20+
\$7 - \$11 ea



SAND CANDLE

Real flame + totally luxuriious
Colours: White
\$8 ea

SIZES



SMALL ARRANGEMENT

Vased florals are the best way to make an impression without breaking the budget, offering a cost-effective option. The price point is influenced by the richness and fullness of the floral selection, potentially incorporating vase-free arrangements, which are available at a competitive price of \$60.

Size: 15cm- 25cm width x Height
\$30 - 60 ea





MEDIUM ARRANGEMENT

Medium arrangements are curated primarily based on the flowers themselves, not restricted by the vessel. Elevating the florals can be effortlessly achieved by arranging them in a taller vessel, thus adding a touch of height and elegance to the overall composition.

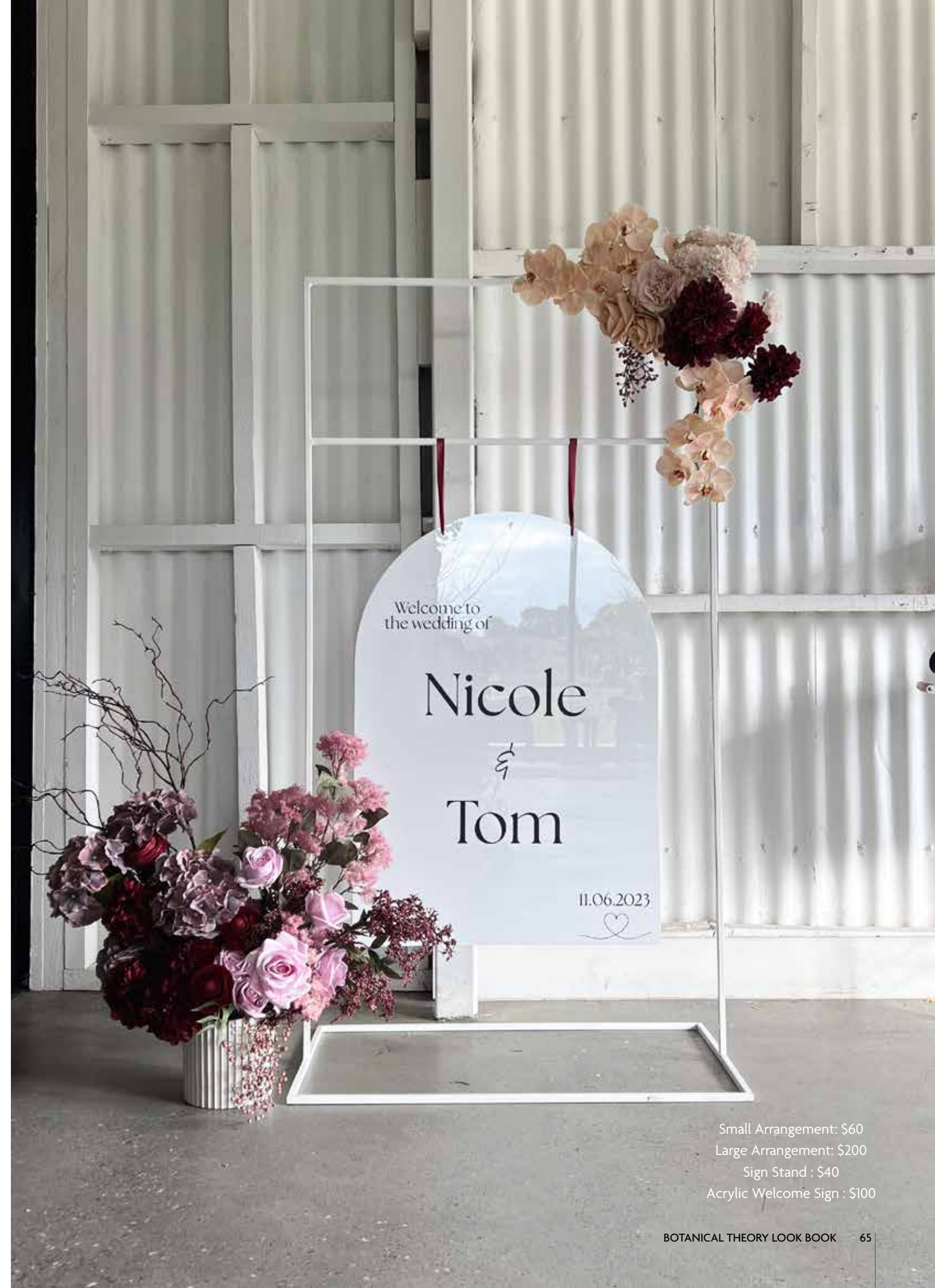
Size: 25cm x 55cm Height
\$80 - 125



LARGE ARRANGEMENT

This size offers remarkable versatility! Its proportions make it perfect for creating stunning aisle florals that can seamlessly transform into table ends, a captivating bar centerpiece, or a graceful addition at the base of your sign stand.

Size: 60cm - 75cm width x height
\$200 ea



Small Arrangement: \$60
Large Arrangement: \$200
Sign Stand : \$40
Acrylic Welcome Sign : \$100



LUXE ARRANGEMENT

These regal pieces are designed to make a show-stopping statement. Their generous sizes are particularly suited for arbors and venues where an extra burst of floral grandeur is required.

Size: 75cm width x height plus
\$300-500 ea

