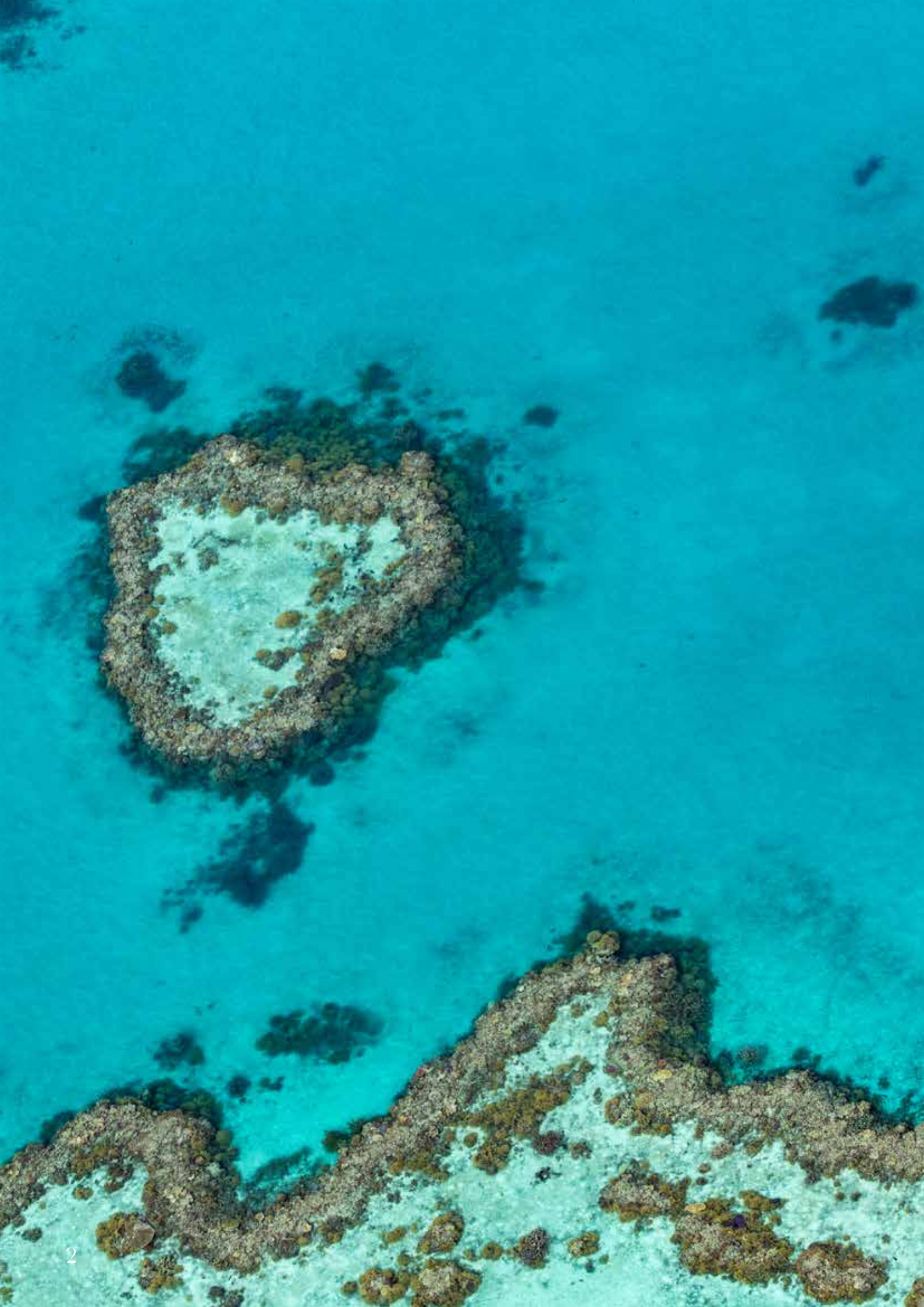




AIRIE BEACH

# NINE ISLANDS

WHITSUNDAYS



# WELCOME

— 04 —

# BEDROOMS

— 06 —

# LIVING

— 10 —

# RULES

— 16 —

# ENVIRONMENT

— 18 —

# PARTNERS

— 20 —

# FINAL

— 24 —

# WELCOME

---

## YOUR PRIVATE RESORT AWAITS

Amid three acres of natural rain forest, with an unparalleled view from atop Mount Whitsunday overlooking Airlie Beach, Nine Islands is your blissfully special sanctuary, staying at the heart of the Great Barrier Reef.

Secure, secluded and private inside a select gated community, this is your exclusive escape to de-screen, de-compress and revitalise your soul — as a serene solo mission or laughing with good friends and family.

This unique property is bound by lush rainforest and national park to the west, with horizon views across the Coral Sea to the north — find out why we love to holiday at Nine Islands (and see if you can count them all!)

Step into the next generation of luxury holiday accommodation on the Whitsundays — a beautiful home with breathtaking views, designer kitchens, spacious king size bedrooms, enormous ensuites and stylish interior.

---

## ATTENTION TO DETAIL

This is an exquisite holiday location with your own private pool, away from prying eyes and two sweeping verandah's snuggled into the lee side of the mountain. You will be able to soak up the day time solitude in acres of peace and quiet and listen to the simple silence of the night time rhythm of the birds, frogs and animals.

You have all the trappings and tranquility you need, yet just five minutes to the beautiful township of Airlie Beach, a cosmopolitan hub with a bustling harbour, five-star restaurants, open-air pubs & plenty of action.

The real secret to a Nine Islands holiday revival — do as much or as little as you please: ride a jet ski to the reef or read a book, sail to the islands or settle in on the balcony, hike the trails or sleep-in all day.

It's all available for you, or already taken care of!

Please do not remove this compendium or pages from Nine Islands (take a photo!)

This property is managed by Whitsunday Holiday Rentals – 0409 831 133.





# BEDROOMS



# YOUR INSPIRED SLEEPING ACCOMMODATION

---

## MARINA BEDROOM

To the western end and up the stairs you will find the Marina Bedroom comprising a King size bed, digital TV and views to the Conway national park and Abel Point marina

There is a walk-in wardrobe and a palatial ensuite with free-standing bath, two rain head inside showers & a unique private and secluded outside shower for you to be naked with nature amongst the rainforests.

*The blinds to the north (looking to the marina) are electrically operated. Press the down shaped button to draw the blinds closed, press the up shaped button to rise. Pressing any button as the blind is moving will halt the blind, so that you may set the blind mid-point.*

The blind to the west, looking to the ridge, is a manual blind. Simply raise or lower as you please.

---

## RAINFOREST BEDROOM

On the lower level of Nine Islands, you will find the colourful Rainforest Bedroom, complete with a Queen-Sized bed and a view that catches glimpses of the ocean over the top of the natural rainforest. A soothing fountain at the start of the greenery will bring a much-needed slumber.

Reverse cycle air-conditioner is operated using the remote control on the wall beside the door. A fan above is operated by the switch on the wall, with three speed setting.

---

## POOLVIEW BEDROOM

To the eastern end of the Nine Islands upper level, you will find this king-sized room with a huge walk-in robe, along with a substantial ensuite where you can still see the blue horizon of the Coral Sea.

You can lie in and let the morning come to you as the sun filters through the banana and paw-paw trees. Please note the sliding door is locked shut to comply with Queensland pool Certification and safety requirements. Do NOT open.

The blinds to the east are simple manual blinds. Lower or raise as you please.

---

## VERSATILE BEDROOM

Aptly named as the Versatile Bedroom is cool and clear, with King size bed that can be easily converted to two King size singles upon your booking – NOTE: if this is required for your stay and you haven't booked it, please contact our concierge.

Reverse cycle air-conditioner is operated using the remote control on the wall beside the door.









# THE LUXURY TOUCHES INSIDE YOUR HOME

---

## COFFEE MAKING

A state-of-the-art Breville Vertuo Nespresso machine is provided for your use, to help get you into your wonderful day.

This is located on the bench in the main gourmet kitchen.

A wide and abundant selection of top-quality Nespresso coffee capsules are located in the drawer directly underneath the machine.

We recommend you check and refill the water container at the rear of the machine to ensure fresh water for your brew.

Select one of the many coffee capsule options, move the lever on the top of the machine to the right to open, (the previous capsule will flip to the waste) place your capsule inside, press the lid down, and switch the lever to the left to lock into place.

Place your coffee cup on the stand (the bespoke coffee glasses are in the cupboard above) and press the small button (with lit coffee cup symbol) on the top of the machine to start your espresso.

The Aerocino will heat your milk, for the perfect latte or cappuccino.

For the latte, use the simple stirrer – while for a cappuccino attach the additional ring from the top of the lid to the stirrer for extra milk froth.

Written instructions with diagrams are also in the drawer with the coffee capsules.

---

## FRIDGE & ICE DISPENSER

The large family sized fridge has the added benefit of chilled water and ice.

Place your glass within the dispenser and press the top lever for ice – both cubed and crushed are available by touching the respective icons above the dispensers.

Place your glass within the dispenser and press the bottom, larger lever for fresh chilled water.

---

## KITCHEN TAP

Press the blue button on the right for fresh filtered water. For boiling hot water for your cup of tea you will need to press both red buttons simultaneously, this acts as a safety feature. (a selection of teas are available in the drawer with the coffee capsules),

# COMFORT LEVELS – INSIDE & OUTSIDE

---

## FULLY AIRCONDITIONED

For complete environmental temperature control on the upper level, access the electronic pad, in the kitchen area to the left of the main doors to the balcony.

Simply touch the pad to activate the ducted AC.

The 'Air-conditioning' tab should appear, if not, touch the blue AIR tab at the top of the page.

You may now set the temperature up or down to the setting most comfortable for your luxury holiday stay.

The fan speed can be set to auto or may be adjusted low through to high speed.

---

## SALT WATER POOL

The glorious, fully fenced, horizon-view salt pool is regularly maintained and automatically cleaned. The quiet filter pump is set to periodically operate each 24 hours to ensure the water is always fresh and clean.

With your privacy complete, use the personal pool as you please any time of the day or night — however, your safety during your stay is paramount and we highly recommend you use the plastic glassware around the pool area. These items are safer than glass and are located in the upper cupboard to the right-hand side of the fridge — enjoy a sip at sunset!

---

## MEDITATION PODS

The grey cloth and black rope super-sized meditation pods are located against the wall in the lower loungeroom and are easy to attach to the Tripod on the balcony.

Simply carry the pod vertically (please do this in a safe way) with one shoulder and reach up with your free hand to attach the D-buckle at the pinnacle of the ropes to the hanging hook. Please ensure you test lightly before entering, and they are weight rated to 180 kilograms.

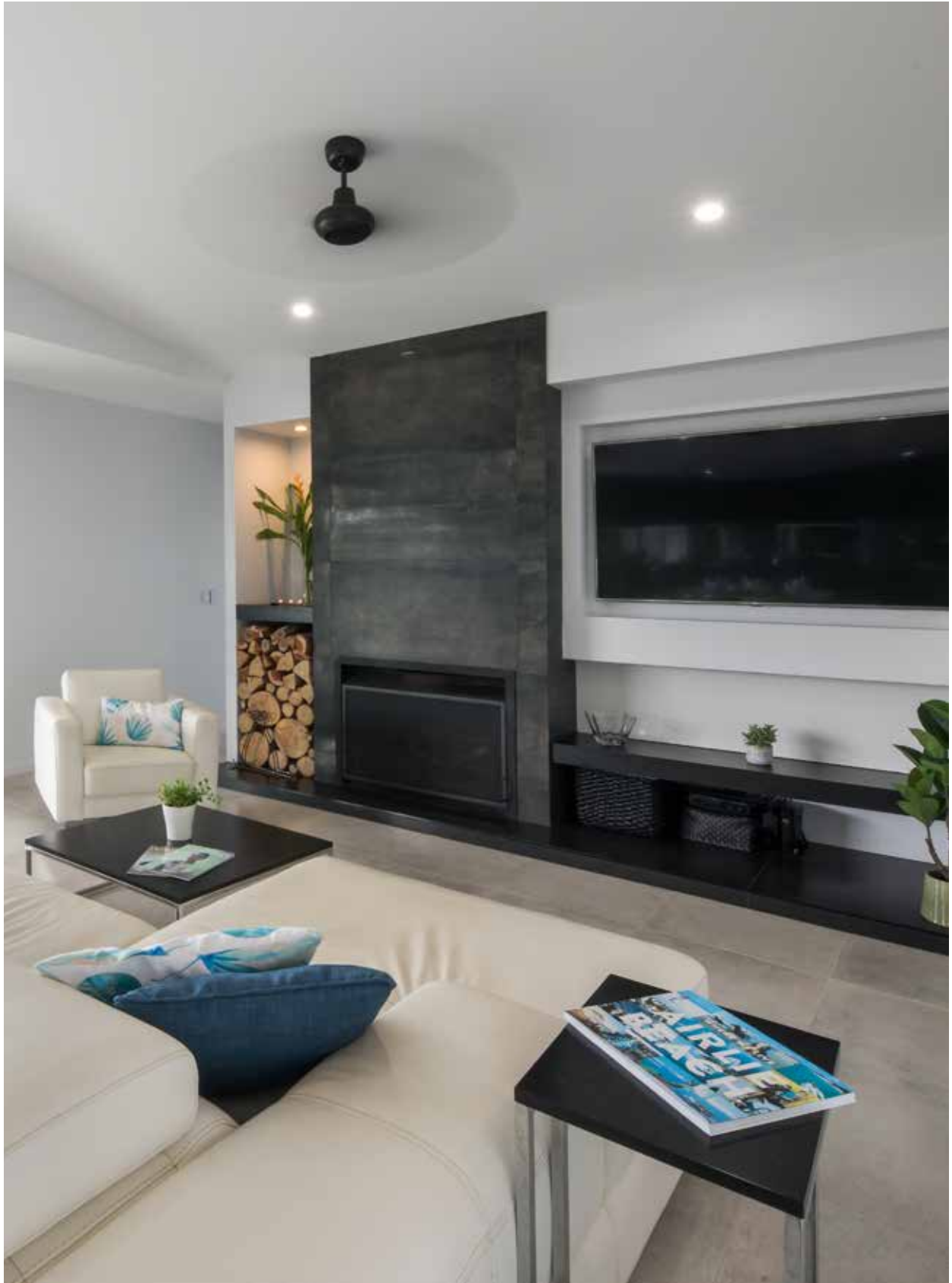
Grab some cushions from the marked trunk near the window and get comfortable — then lay down and read a book, chat with your fellow guests or simply let the whisper breezes of the famous Mount Whitsunday wash over you and revitalise your soul.

While the pods are extremely durable, please take care when climbing into them, lying in them and when moving or assembling them, and please bring them inside the house proper if inclement weather is looming, and at the end of your stay — they will then last until your next visit....

There is an option to attach a mosquito net (also located in the cushion trunk), by taking the pod off the hook and feeding the net over the top leaving the strong nylon sleeve at the top — the net will simply fall down the triangular ropes and you can draw it in at the bottom.







# STAYING CONNECTED WHILE YOU RELAX

---

## INTERNET

Please connect to the home's fast and free WiFi and search for 'StayNineIslands' on your device.

Multiple devices can be connected simultaneously for the duration of your stay.

This signal completely covers both levels of the home — please do not move or disconnect the WiFi booster base in the office.

## WiFi Network

---

Password	staynineislands
----------	-----------------

---

## COMPLIMENTARY FOXTEL

While the view is much more spectacular than the box — if you are looking for sport, movies, or news, use the 'LG TV' remote control to firstly turn the TV on.

Foxtel is accessed using the 'Foxtel' remote, aim it at the Foxtel box under the bookshelf to connect to Foxtel.

All free-to-air channels are also accessed via Foxtel. There is an instruction sheet beside the remote controls under the TV for further information navigating the channels.

You may also connect the Smart TV to Netflix and Kayo, using your own personal account.

# RULES

---

## **WE WANT YOU TO ENJOY YOUR STAY, BUT THERE ARE SOME RULES...**

- Please respect neighbours, Fines apply for excessive noise.
- If you break something, please let us know.
- No pets.
- No parties, gatherings or functions allowed.
- No children under 15.
- No Schoolies.
- This home is eco-friendly, please abide by instructions.
- Park your cars on-site, there are 4 spots provided. No street parking.
- STRICTLY no parties, a \$5000 penalty applies. (refer T&C's).







# ENVIRONMENT



# NINE ISLANDS

## ECO-FRIENDLY ACTIVITY

---

### ECO-FRIENDLY LIVING

Being ecofriendly and kind to the environment is the mantra at Nine Islands, and we do all we can to minimise our carbon footprint.

Much of the power in the home is supplied by solar panels affixed to the sweeping roof, when not in use it goes back to the grid.

Please separate waste where possible by placing recycling in the separate bins in the kitchen under the sink.

All used Nespresso coffee pods (they automatically go to the internal waste bin in the machine) are returned to Nespresso for recycling.

All bags and plastics provided are the most ecofriendly options at present.

Reusable shopping bags are located in the bottom drawer on the right, of the kitchen island bench for your use shopping at the local supermarkets and the Saturday morning Lions Market on the foreshore.

In the fully equipped laundry, if you need to wash any personal items, you are welcome to use the washing machine, and the ecofriendly washing detergent.

Only a small amount is required (maximum is indicated on the detergent cup), as the detergent foams up through the drain, and the less you use, the more the reef will thank you.....

---

### BIO DEGRADABLE BAGS

Please help protect our World Heritage listed Great Barrier Reef, by placing all sanitary items in the bags provided, and then into the rubbish bins.

The bags are biodegradable and recognised by the green apples printed on them and can be placed in the general waste, not flushed into the sewage system.

These eco-friendly bags are located in vanities in all ensuites and the powder room.

---

### LP GAS CONNECTION

Your secluded home is serviced by LP Gas, only for the oven and is supplied via individual gas bottles.

Two full bottles are provided for your holiday stay.

In the unlikely event the gas for the stove runs out, call our concierge, or go to the bottles at the top end of the driveway near the bamboo. Turn the switch on the pipe towards the opposing bottle to create a new gas flow.

Please notify the concierge upon departure if you have done this, so that it can be replaced for your next stay.

The BBQ is also gas and easy to use on the lower deck.

# PARTNERS

---

## OUTSTANDING LOCATION

The wonderful Whitsundays region is home to many award-winning adventures & experiences, and our partners can set you on the right trip at 'Nine Islands' discounted rates.

Please contact Nine Islands Concierge to book your adventure, check availability, or assess your options.

### Nine Islands Concierge

---

Contact	0409 831 133
---------	--------------

---

## TOURS & ACTIVITIES

- Conway National Park
- Cedar Creek Falls
- Coral Sea Islands
- Hamilton Island
- Great Barrier Reef
- Whitehaven Beach
- Scuba Diving
- Sailing (guided or bareboat)
- Sunset Cruises
- Snorkelling
- Fishing
- Jet skis and Adrenaline Machines
- Scenic flights including the 'Heart of the Reef'
- Helicopter Tours
- Great restaurants and Pubs
- Park Run from Abel Point Marina each Saturday at 7am.
- Saturday Market, check out local artisans or try an Airlie Pie (Best pie ever)
- Explore Hinterland Towns or
- Create your Own Adventure and forge New Memories...









# MAXIMISE OUR GUESTS-ONLY QUALITY PREFERRED PARTNERS.

---

## YOGA & MASSAGE

If you are feeling like a slow, mindful yoga session please contact our gorgeous and highly recommended preferred yoga instructor. Lily studied in India where she became certified in Hatha Flow and Ashtanga Vinyasa and can pay a home visit to Nine Islands for a personal session depending on bookings, or you can join in one of her classes down on the picturesque foreshore.

### Yoga Instructor

Lily	0451 464 290
------	--------------

The healing hands of our preferred masseuse will do wonders to ease your tension. Beau is fully accredited masseuse and myotherapist. Depending on timings, he'll come to Nine Islands to give your shoulders that much needed release. (You may be able to claim your treatment through your private health cover.)

### Myotherapist /Massage

Beau	0403 321 584
------	--------------

---

## SPORT – ANY ONE FOR TENNIS?

The tennis court on Mt Whitsunday drive is for the exclusive use of all within the gated community and is free to use. Racquets and balls are located in the cabinet under the TV of the lower lounge room and should be returned upon completion.

No parties, nor loud music, and please consider others who may also wish to use the facility.

---

## PROVISIONING YOUR SUPPLIES

Nine Islands can highly recommend Airlie Providores for all your provisioning needs. All food is local, fresh, delicious and can be delivered to the door. Say 'No' to wasting good, fun holiday time planning, shopping and preparing meals. Let them know you are staying at Nine Islands.

### Fresh Food Supplies

Airlie Providores	0410 788 302
info@airlieprovidores.com.au	

---

## AIRPORT TRANSFERS

There are several options for airport transport, or trips around town, with our preferred partners at your special Nine Islands discounted rate.

High end transfers/adventures BMW/Mercedes

### ABES Transport

Eliza	(07) 4948-2317
-------	----------------

SAAB's and Audi's contact

### Whitsunday Luxury Shuttles

Craig	0401 518 213
-------	--------------

---

### Taxi rides (part of 13CABS)

Chelle	0401 574 738
--------	--------------

Car Hire is available through major companies at the Airport but in Airlie Beach we recommend the boutique service of the following in the main street.

### We Do Scooters and Cars

Richard	4946 6969
---------	-----------

# FINAL



## **Thank you and farewell...**

We trust you enjoyed your holiday at Nine Islands, please leave your comments or travel tips in the guest book and online – if there was something we can improve on please contact us direct at [staynineislands@gmail.com](mailto:staynineislands@gmail.com)

Thank you, we wish you safe travels and we look forward to you returning to enjoy another luxury stay.

Bon voyage!